



[Go to Product page](#)

Datasheet for ABIN7269763
anti-PPA2 antibody (AA 33-100)

1 Image

Overview

Quantity:	100 µL
Target:	PPA2
Binding Specificity:	AA 33-100
Reactivity:	Human
Host:	Rabbit
Clonality:	Polyclonal
Conjugate:	This PPA2 antibody is un-conjugated
Application:	Western Blotting (WB), Immunohistochemistry (IHC), Immunofluorescence (IF)

Product Details

Purpose:	PPA2 Rabbit pAb
Immunogen:	Recombinant fusion protein containing a sequence corresponding to amino acids 33-100 of human PPA2 (NP_008834.3).
Sequence:	ALYHTEERGQ PCSQNYRLFF KNVTGHIYISP FHDIPKLVNS KEENGIPMKK ARNDEYENLF NMIVEIPR
Isotype:	IgG
Cross-Reactivity:	Human, Mouse, Rat
Characteristics:	Polyclonal Antibodies
Purification:	Affinity purification

Target Details

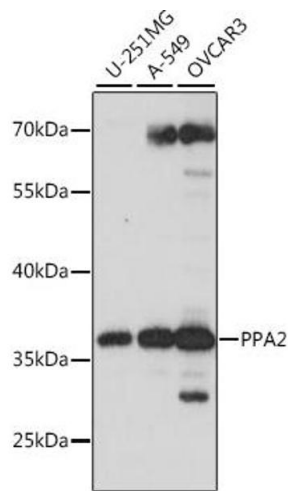
Target:	PPA2
Alternative Name:	PPA2 (PPA2 Products)
Background:	The protein encoded by this gene is localized to the mitochondrion, is highly similar to members of the inorganic pyrophosphatase (PPase) family, and contains the signature sequence essential for the catalytic activity of PPase. PPases catalyze the hydrolysis of pyrophosphate to inorganic phosphate, which is important for the phosphate metabolism of cells. Alternate transcriptional splice variants, encoding different isoforms, have been characterized.,PPA2,HSPC124,SCFAI,SCFI,SID6-306,Cancer,Signal Transduction,Endocrine & Metabolism,Mitochondrial metabolism,Mitochondrial markers,PPA2
Molecular Weight:	18kDa/25kDa/34kDa/37kDa/39kDa
Gene ID:	27068
UniProt:	Q9H2U2

Application Details

Application Notes:	WB,1:500 - 1:2000,IHC,1:50 - 1:100,IF,1:50 - 1:100
Restrictions:	For Research Use only

Handling

Format:	Liquid
Buffer:	PBS with 0.02 % sodium azide,50 % glycerol, pH 7.3.
Preservative:	Sodium azide
Precaution of Use:	This product contains Sodium azide: a POISONOUS AND HAZARDOUS SUBSTANCE which should be handled by trained staff only.
Storage:	-20 °C
Storage Comment:	Store at -20°C. Avoid freeze / thaw cycles.



Western Blotting

Image 1. Western blot analysis of extracts of various cell lines, using PP antibody (ABIN7269763) at 1:1000 dilution. Secondary antibody: HRP Goat Anti-Rabbit IgG (H+L) (ABIN1684268 and ABIN3020597) at 1:10000 dilution. Lysates/proteins: 25 µg per lane. Blocking buffer: 3% nonfat dry milk in TBST. Detection: ECL Basic Kit (RM00020). Exposure time: 10s.