



[Go to Product page](#)

Datasheet for ABIN7269765
anti-PYCRL antibody (AA 13-286)

1 Image

Overview

Quantity:	100 µL
Target:	PYCRL
Binding Specificity:	AA 13-286
Reactivity:	Human
Host:	Rabbit
Clonality:	Polyclonal
Conjugate:	This PYCRL antibody is un-conjugated
Application:	Western Blotting (WB)

Product Details

Purpose:	PYCRL Rabbit pAb
Immunogen:	Recombinant fusion protein containing a sequence corresponding to amino acids 13-286 of human PYCRL (NP_075566.2).
Sequence:	MAAAEPSRR VGFVGAGRMA GAIAQGLIRA GKVEAQHILA SAPTDRNLCH FQALGCRTH SNQEVLSQCL LVIFATKPHV LPAVLAEVAP VVTEHILVS VAAGVSLSTL EELLPPNTRV LRVLPNLPV VQEGAIMAR GRHVGSSSETK LLQHLLLEACG RCEEVPEAYV DIHTGLSGSG VAFVCAFSEA LAEGAVKMGM PSSLAHRIAA QTLTGAKML LHEGQHPAQL RSDVCTPGGT TIYGLHALEQ GGLRAATMSA VEAATCRAKE LSRK
Isotype:	IgG
Cross-Reactivity:	Mouse
Characteristics:	Polyclonal Antibodies

Product Details

Purification: Affinity purification

Target Details

Target: PYCRL

Alternative Name: PYCRL ([PYCRL Products](#))

Background: This gene encodes a protein that belongs to the pyrroline-5-carboxylate reductase family of enzymes. Members of this family catalyze the final step in proline biosynthesis, converting pyrroline-5-carboxylate to proline. Glutamate and ornithine are precursors in the synthesis of proline. The protein encoded by this gene is a cytoplasmic enzyme involved in the biosynthesis of proline from ornithine. [provided by RefSeq, Aug 2016],PYCRL,Signal Transduction,Endocrine & Metabolism,Amino acid metabolism,PYCRL

Gene ID: 65263

UniProt: [Q53H96](#)

Application Details

Application Notes: WB,1:500 - 1:2000

Restrictions: For Research Use only

Handling

Format: Liquid

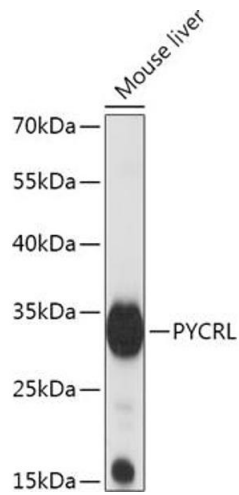
Buffer: PBS with 0.02 % sodium azide,50 % glycerol, pH 7.3.

Preservative: Sodium azide

Precaution of Use: This product contains Sodium azide: a POISONOUS AND HAZARDOUS SUBSTANCE which should be handled by trained staff only.

Storage: -20 °C

Storage Comment: Store at -20°C. Avoid freeze / thaw cycles.



Western Blotting

Image 1. Western blot analysis of extracts of Mouse liver, using PYCRL antibody (ABIN7269765) at 1:1000 dilution. Secondary antibody: HRP Goat Anti-Rabbit IgG (H+L) (ABIN1684268 and ABIN3020597) at 1:10000 dilution. Lysates/proteins: 25 µg per lane. Blocking buffer: 3 % nonfat dry milk in TBST. Detection: ECL Basic Kit (RM00020). Exposure time: 1s.