

Datasheet for ABIN7269769
anti-PDHA1 antibody (pSer293)



[Go to Product page](#)

1 Image

Overview

Quantity:	100 µL
Target:	PDHA1
Binding Specificity:	pSer293
Reactivity:	Human
Host:	Rabbit
Clonality:	Polyclonal
Conjugate:	This PDHA1 antibody is un-conjugated
Application:	Western Blotting (WB)

Product Details

Purpose:	Phospho-PDHA1-S293 Rabbit pAb
Immunogen:	A phospho specific peptide corresponding to residues surrounding S293 of human PDHA1
Isotype:	IgG
Cross-Reactivity:	Human, Mouse, Rat
Characteristics:	Phosphorylated Antibodies
Purification:	Affinity purification

Target Details

Target:	PDHA1
Alternative Name:	PDHA1

Target Details

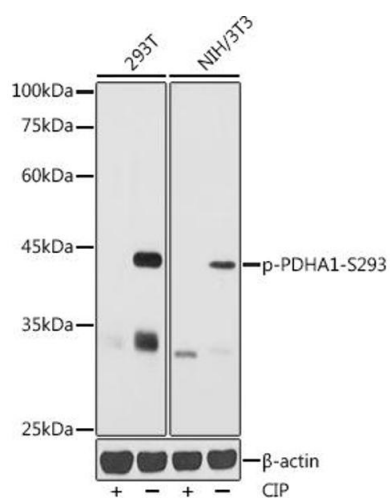
Background:	The pyruvate dehydrogenase (PDH) complex is a nuclear-encoded mitochondrial multienzyme complex that catalyzes the overall conversion of pyruvate to acetyl-CoA and CO(2), and provides the primary link between glycolysis and the tricarboxylic acid (TCA) cycle. The PDH complex is composed of multiple copies of three enzymatic components: pyruvate dehydrogenase (E1), dihydrolipoamide acetyltransferase (E2) and lipoamide dehydrogenase (E3). The E1 enzyme is a heterotetramer of two alpha and two beta subunits. This gene encodes the E1 alpha 1 subunit containing the E1 active site, and plays a key role in the function of the PDH complex. Mutations in this gene are associated with pyruvate dehydrogenase E1-alpha deficiency and X-linked Leigh syndrome. Alternatively spliced transcript variants encoding different isoforms have been found for this gene.[provided by RefSeq, Mar 2010],PDHA, PDHAD, PDHCE1A, PHE1A,Cancer,Carbohydrate metabolism,Endocrine & Metabolism,Mitochondrial metabolism,Mitochondrial metabolism_Mitochondrial markers,Signal Transduction,Warburg Effect,PDHA1
Molecular Weight:	40kDa
Gene ID:	5160
UniProt:	P08559
Pathways:	Warburg Effect

Application Details

Application Notes:	WB,1:500 - 1:2000
Restrictions:	For Research Use only

Handling

Format:	Liquid
Buffer:	PBS with 0.02 % sodium azide,0.05 % BSA,50 % glycerol, pH 7.3.
Preservative:	Sodium azide
Precaution of Use:	This product contains Sodium azide: a POISONOUS AND HAZARDOUS SUBSTANCE which should be handled by trained staff only.
Storage:	-20 °C
Storage Comment:	Store at -20°C. Avoid freeze / thaw cycles.



Western Blotting

Image 1. Western blot analysis of extracts of various cell lines, using Phospho-PDH-S293 antibody (ABIN7269769) at 1:1000 dilution. 293T cells and NIH/3T3 cells were treated by CIP (20 uL/400 μL) at 37 °C for 1 hour. Secondary antibody: HRP Goat Anti-Rabbit IgG (H+L) (ABIN1684268 and ABIN3020597) at 1:10000 dilution. Lysates/proteins: 25 μg per lane. Blocking buffer: 3 % nonfat dry milk in TBST. Detection: ECL Basic Kit (RM00020). Exposure time: 10s.