

Datasheet for ABIN7269774
anti-PDP antibody (AA 72-260)[Go to Product page](#)

2 Images

Overview

Quantity:	100 µL
Target:	PDP
Binding Specificity:	AA 72-260
Reactivity:	Human
Host:	Rabbit
Clonality:	Polyclonal
Conjugate:	This PDP antibody is un-conjugated
Application:	Western Blotting (WB), Immunofluorescence (IF)

Product Details

Purpose:	PDP1 Rabbit pAb
Immunogen:	Recombinant fusion protein containing a sequence corresponding to amino acids 72-260 of human PDP1 (NP_060914.2).
Sequence:	ASTPQKFYLT PPQVNSILKA NEYSFKVPEF DGKNVSSILG FDSNQLPANA PIEDRRSAAT CLQTRGMLLG VFDGHAGCAC SQAVSERLFY YIAVSLLPHE TLLEIENAVE SGRALLPILQ WHKHPNDYFS KEASKLYFNS LRITYWQELID LNTGESTDID VKEALINAFK RLDNDISLEA QVGDPNSFL
Isotype:	IgG
Cross-Reactivity:	Human, Mouse, Rat
Characteristics:	Polyclonal Antibodies

Product Details

Purification: Affinity purification

Target Details

Target: PDP

Alternative Name: PDP1 ([PDP Products](#))

Background: Pyruvate dehydrogenase (E1) is one of the three components (E1, E2, and E3) of the large pyruvate dehydrogenase complex. Pyruvate dehydrogenase kinases catalyze phosphorylation of serine residues of E1 to inactivate the E1 component and inhibit the complex. Pyruvate dehydrogenase phosphatases catalyze the dephosphorylation and activation of the E1 component to reverse the effects of pyruvate dehydrogenase kinases. Pyruvate dehydrogenase phosphatase is a heterodimer consisting of catalytic and regulatory subunits. Two catalytic subunits have been reported, one is predominantly expressed in skeletal muscle and another one is much more abundant in the liver. The catalytic subunit, encoded by this gene, is the former, and belongs to the protein phosphatase 2C (PP2C) superfamily. Along with the pyruvate dehydrogenase complex and pyruvate dehydrogenase kinases, this enzyme is located in the mitochondrial matrix. Mutation in this gene causes pyruvate dehydrogenase phosphatase deficiency. Multiple alternatively spliced transcript variants encoding different isoforms have been identified.,PDP1,PDH,PDP,PDPC,PPM2A,PPM2C,PDP1

Molecular Weight: 61kDa/63kDa

Gene ID: 54704

UniProt: [Q9P0J1](#)

Application Details

Application Notes: WB,1:500 - 1:2000,IF,1:50 - 1:200

Restrictions: For Research Use only

Handling

Format: Liquid

Buffer: PBS with 0.02 % sodium azide,50 % glycerol, pH 7.3.

Preservative: Sodium azide

Precaution of Use: This product contains Sodium azide: a POISONOUS AND HAZARDOUS SUBSTANCE which

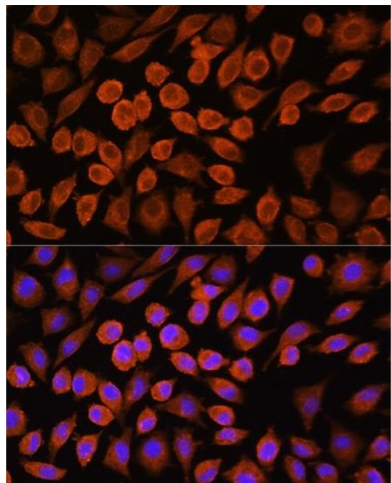
Handling

should be handled by trained staff only.

Storage: -20 °C

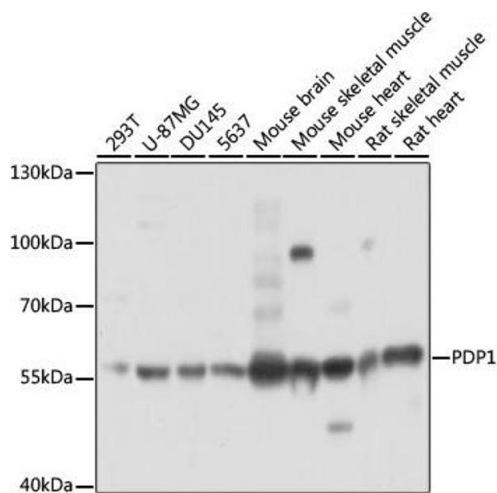
Storage Comment: Store at -20°C. Avoid freeze / thaw cycles.

Images



Immunofluorescence

Image 1. Immunofluorescence analysis of L929 cells using PDP1 Rabbit pAb (ABIN7269774) at dilution of 1:100. Blue: DAPI for nuclear staining.



Western Blotting

Image 2. Western blot analysis of extracts of various cell lines, using PDP1 antibody (ABIN7269774) at 1:3000 dilution. Secondary antibody: HRP Goat Anti-Rabbit IgG (H+L) (ABIN1684268 and ABIN3020597) at 1:10000 dilution. Lysates/proteins: 25 µg per lane. Blocking buffer: 3 % nonfat dry milk in TBST. Detection: ECL Basic Kit (RM00020). Exposure time: 1s.