

Datasheet for ABIN7269779

anti-PKM2 antibody**2** Images[Go to Product page](#)

Overview

Quantity:	100 µL
Target:	PKM2
Reactivity:	Human
Host:	Rabbit
Clonality:	Monoclonal
Conjugate:	This PKM2 antibody is un-conjugated
Application:	Western Blotting (WB)

Product Details

Purpose:	PKM2-specific Rabbit mAb
Immunogen:	Recombinant protein of Human PKM2.
Isotype:	IgG
Cross-Reactivity:	Human, Mouse, Rat
Characteristics:	Monoclonal Antibodies
Purification:	Affinity purification

Target Details

Target:	PKM2
Alternative Name:	PKM2 (PKM2 Products)
Background:	This gene encodes a protein involved in glycolysis. The encoded protein is a pyruvate kinase

Target Details

that catalyzes the transfer of a phosphoryl group from phosphoenolpyruvate to ADP, generating ATP and pyruvate. This protein has been shown to interact with thyroid hormone and may mediate cellular metabolic effects induced by thyroid hormones. This protein has been found to bind Opa protein, a bacterial outer membrane protein involved in gonococcal adherence to and invasion of human cells, suggesting a role of this protein in bacterial pathogenesis. Several alternatively spliced transcript variants encoding a few distinct isoforms have been reported.

[provided by RefSeq, May 2011],CTHBP,HEL-S-

30,OIP3,PK3,PKM2,TCB,THBP1,PKM,Cancer,Carbohydrate metabolism,Endocrine &

Metabolism,Epigenetics & Nuclear Signaling,Protein phosphorylation,RNA Binding,Signal

Transduction,Tumor biomarkers,Warburg Effect,PKM2

Molecular Weight: 58kDa

Gene ID: 5315

UniProt: [P14618](#)

Pathways: [Warburg Effect](#)

Application Details

Application Notes: WB,1:500 - 1:2000

Restrictions: For Research Use only

Handling

Format: Liquid

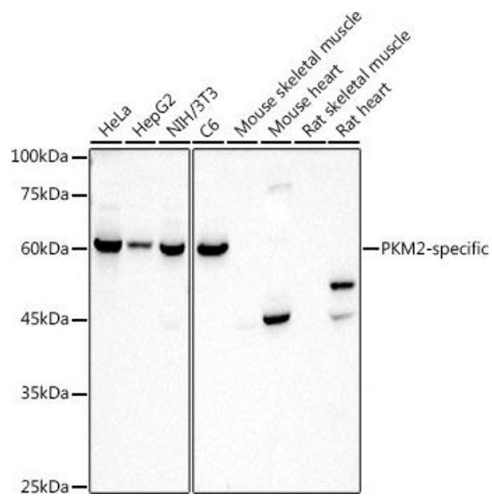
Buffer: PBS with 0.02 % sodium azide,50 % glycerol, pH 7.3.

Preservative: Sodium azide

Precaution of Use: This product contains Sodium azide: a POISONOUS AND HAZARDOUS SUBSTANCE which should be handled by trained staff only.

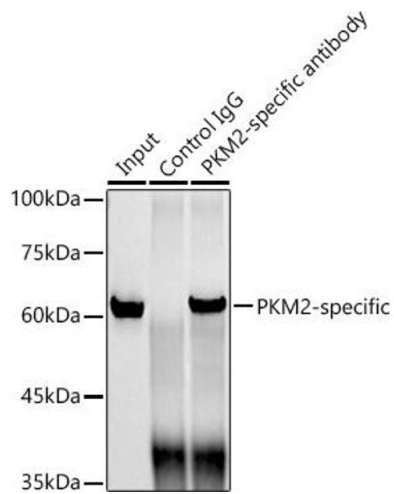
Storage: -20 °C

Storage Comment: Store at -20°C. Avoid freeze / thaw cycles.



Western Blotting

Image 1. Western blot analysis of extracts of various cell lines, using PKM2-specific antibody (ABIN7269779) at 1:1000 dilution. Secondary antibody: HRP Goat Anti-Rabbit IgG (H+L) (ABIN1684268 and ABIN3020597) at 1:10000 dilution. Lysates/proteins: 25 µg per lane. Blocking buffer: 3 % nonfat dry milk in TBST. Detection: ECL Basic Kit (RM00020). Exposure time: 3s.



Immunoprecipitation

Image 2. Immunoprecipitation analysis of 300 µg extracts of HeLa cells using 3 µg PKM2-specific antibody (ABIN7269779). Western blot was performed from the immunoprecipitate using PKM2-specific antibody (ABIN7269779) at a dilution of 1:1000.