

Datasheet for ABIN7269786  
**anti-RABIF antibody (AA 1-123)**



[Go to Product page](#)

2 Images

## Overview

Quantity:	100 µL
Target:	RABIF
Binding Specificity:	AA 1-123
Reactivity:	Human
Host:	Rabbit
Clonality:	Polyclonal
Conjugate:	This RABIF antibody is un-conjugated
Application:	Western Blotting (WB), Immunofluorescence (IF)

## Product Details

Purpose:	RABIF Rabbit pAb
Immunogen:	Recombinant fusion protein containing a sequence corresponding to amino acids 1-123 of human RABIF (NP_002862.2).
Sequence:	MEPAEQPSEL VSAEGRNRKA VLCQRCGSRV LQPGTALFSR RQLFLPSMRK KPALSDGNSP DGDLLQEHWL VEDMFIFENV GFTKDVGNIK FLVCADCEIG PIGWHCLDDK NSFYVALERV SHE
Isotype:	IgG
Cross-Reactivity:	Human, Mouse, Rat
Characteristics:	Polyclonal Antibodies
Purification:	Affinity purification

## Target Details

---

Target:	RABIF
Alternative Name:	RABIF ( <a href="#">RABIF Products</a> )
Background:	This gene encodes a member of the SCE4/YPT1/RAB family of small GTP-binding proteins that are involved in the regulation of intracellular vesicular transport. This protein stimulates GTP-GDP exchange in SEC4, and to a lesser extent in YPT1 and RAB3A, and may play a general role in vesicular transport.,RABIF,MSS4,RASGFR3,RASGRF3,Signal Transduction,G protein signaling,Signal Transduction,RABIF
Molecular Weight:	13kDa
Gene ID:	5877
UniProt:	<a href="#">P47224</a>

## Application Details

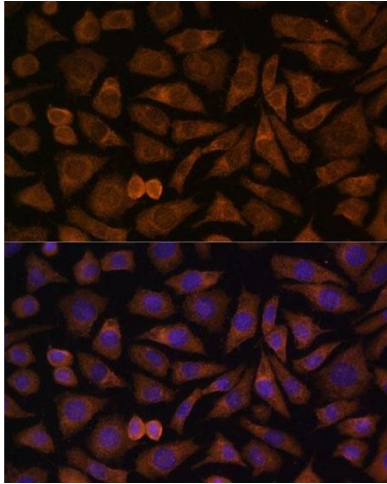
---

Application Notes:	WB,1:500 - 1:2000,IF,1:50 - 1:100
Restrictions:	For Research Use only

## Handling

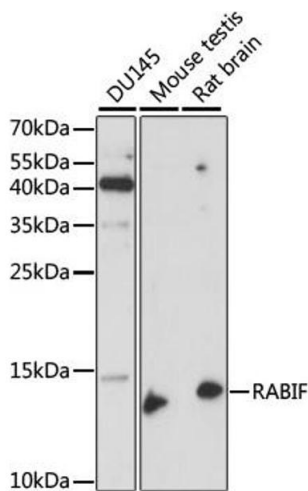
---

Format:	Liquid
Buffer:	PBS with 0.02 % sodium azide,50 % glycerol, pH 7.3.
Preservative:	Sodium azide
Precaution of Use:	This product contains Sodium azide: a POISONOUS AND HAZARDOUS SUBSTANCE which should be handled by trained staff only.
Storage:	-20 °C
Storage Comment:	Store at -20°C. Avoid freeze / thaw cycles.



### Immunofluorescence

**Image 1.** Immunofluorescence analysis of L929 cells using RABIF Polyclonal Antibody (ABIN7269786) at dilution of 1:100 (40x lens). Blue: DAPI for nuclear staining.



### Western Blotting

**Image 2.** Western blot analysis of extracts of various cell lines, using RABIF antibody (ABIN7269786) at 1:1000 dilution. Secondary antibody: HRP Goat Anti-Rabbit IgG (H+L) (ABIN1684268 and ABIN3020597) at 1:10000 dilution. Lysates/proteins: 25 µg per lane. Blocking buffer: 3 % nonfat dry milk in TBST. Detection: ECL Enhanced Kit (RM00021). Exposure time: 90s.