

Datasheet for ABIN7269787
anti-RABL3 antibody (AA 1-236)



[Go to Product page](#)

3 Images

Overview

Quantity:	100 µL
Target:	RABL3
Binding Specificity:	AA 1-236
Reactivity:	Human
Host:	Rabbit
Clonality:	Polyclonal
Conjugate:	This RABL3 antibody is un-conjugated
Application:	Western Blotting (WB), Immunofluorescence (IF)

Product Details

Purpose:	RABL3 Rabbit pAb
Immunogen:	Recombinant fusion protein containing a sequence corresponding to amino acids 1-236 of human RABL3 (NP_776186.2).
Sequence:	MASLDRVKVL VLGDSGVGKS SLVHLLCQNQ VLGNPSTVVG CSVDVRVHDY KEGTPEEKTY YIELWDVGGG VGSASSVKST RAVFYNSVNG IIFVHDLTNK KSSQNLRRWS LEALNRDLVP TGVLVTNGDY DQEAFADNQL PLLVIGTKLD QIHETKRHEV LTRTAFLAED FNPEEINLDC TNPRYLAAGS SNAVKLSRFF DKVIEKRYFL REGNQIPGFP DRKRFAGAGTL KSLHYD
Isotype:	IgG
Cross-Reactivity:	Human, Mouse
Characteristics:	Polyclonal Antibodies

Product Details

Purification: Affinity purification

Target Details

Target: RABL3

Alternative Name: RABL3 ([RABL3 Products](#))

Background: Required for KRAS signaling regulation and modulation of cell proliferation. Regulator of KRAS prenylation, and probably prenylation of other small GTPases. Required for lymphocyte development and function (By similarity. Not required for myeloid cell development (By similarity. RABL3, Signal Transduction, G protein signaling, Signal Transduction, RABL3

Molecular Weight: 26kDa

Gene ID: 285282

UniProt: [Q5HYI8](#)

Application Details

Application Notes: WB, 1:500 - 1:2000, IF, 1:50 - 1:200

Restrictions: For Research Use only

Handling

Format: Liquid

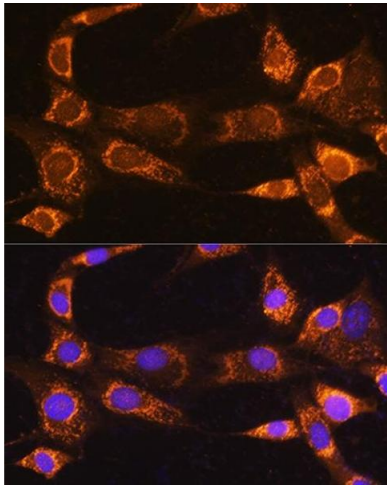
Buffer: PBS with 0.02 % sodium azide, 50 % glycerol, pH 7.3.

Preservative: Sodium azide

Precaution of Use: This product contains Sodium azide: a POISONOUS AND HAZARDOUS SUBSTANCE which should be handled by trained staff only.

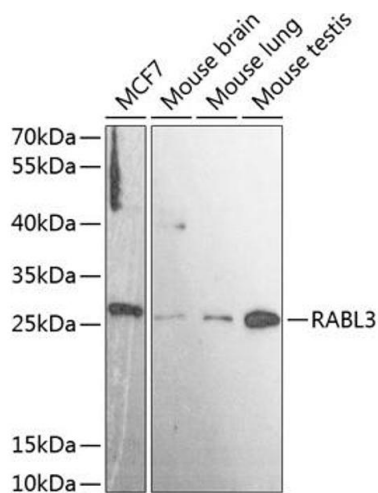
Storage: -20 °C

Storage Comment: Store at -20°C. Avoid freeze / thaw cycles.



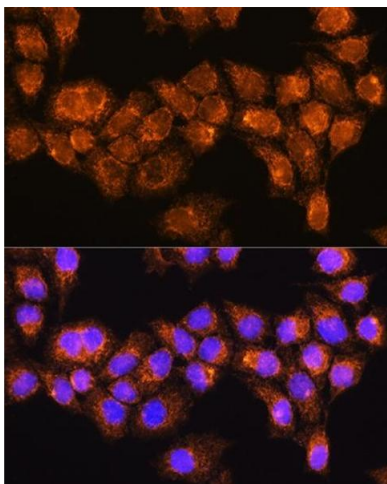
Immunofluorescence

Image 1. Immunofluorescence analysis of NIH/3T3 cells using R Rabbit pAb (ABIN7269787) at dilution of 1:100. Blue: DAPI for nuclear staining.



Western Blotting

Image 2. Western blot analysis of extracts of various cell lines, using R antibody (ABIN7269787) at 1:3000 dilution. Secondary antibody: HRP Goat Anti-Rabbit IgG (H+L) (ABIN1684268 and ABIN3020597) at 1:10000 dilution. Lysates/proteins: 25 µg per lane. Blocking buffer: 3 % nonfat dry milk in TBST. Detection: ECL Basic Kit (RM00020). Exposure time: 90s.



Immunofluorescence

Image 3. Immunofluorescence analysis of HeLa cells using R Rabbit pAb (ABIN7269787) at dilution of 1:100. Blue: DAPI for nuclear staining.