

Datasheet for ABIN7269808  
**anti-RAB38 antibody (AA 92-211)**[Go to Product page](#)

## 1 Image

## Overview

Quantity:	100 µL
Target:	RAB38
Binding Specificity:	AA 92-211
Reactivity:	Human
Host:	Rabbit
Clonality:	Polyclonal
Conjugate:	This RAB38 antibody is un-conjugated
Application:	Western Blotting (WB)

## Product Details

Purpose:	RAB38 Rabbit pAb
Immunogen:	Recombinant fusion protein containing a sequence corresponding to amino acids 92-211 of human RAB38 (NP_071732.1).
Sequence:	VTRPATFEAV AKWKNDLDSK LSLPNGKPVS VVLLANKCDQ GKDVLMNNGL KMDQFCKEHG FVGWFETSAK ENINIDEASR CLVKHILANE CDLMESIEPD VVKPHLTSTK VASCSGCAKS
Isotype:	IgG
Cross-Reactivity:	Human, Mouse, Rat
Characteristics:	Polyclonal Antibodies
Purification:	Affinity purification

## Target Details

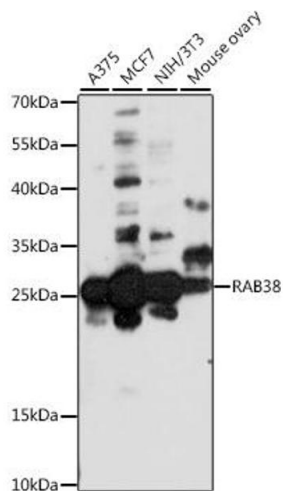
Target:	RAB38
Alternative Name:	RAB38 ( <a href="#">RAB38 Products</a> )
Background:	May be involved in melanosomal transport and docking. Involved in the proper sorting of TYRP1. Involved in peripheral melanosomal distribution of TYRP1 in melanocytes, the function, which probably is implicating vesicle-trafficking, includes cooperation with ANKRD27 and VAMP7 (By similarity. Plays a role in the maturation of phagosomes that engulf pathogens, such as S.aureus and M.tuberculosis. Plays an important role in the control of melanin production and melanosome biogenesis. In concert with RAB32, regulates the proper trafficking of melanogenic enzymes TYR, TYRP1 and DCT/TYRP2 to melanosomes in melanocytes (By similarity.,RAB38,NY-MEL-1,rrGTPbp,Signal Transduction,G protein signaling,Signal Transduction,RAB38
Molecular Weight:	23kDa
Gene ID:	23682
UniProt:	<a href="#">P57729</a>

## Application Details

Application Notes:	WB,1:500 - 1:2000
Restrictions:	For Research Use only

## Handling

Format:	Liquid
Buffer:	PBS with 0.02 % sodium azide,50 % glycerol, pH 7.3.
Preservative:	Sodium azide
Precaution of Use:	This product contains Sodium azide: a POISONOUS AND HAZARDOUS SUBSTANCE which should be handled by trained staff only.
Storage:	-20 °C
Storage Comment:	Store at -20°C. Avoid freeze / thaw cycles.



### Western Blotting

**Image 1.** Western blot analysis of extracts of various cell lines, using R antibody (ABIN7269808) at 1:1000 dilution. Secondary antibody: HRP Goat Anti-Rabbit IgG (H+L) (ABIN1684268 and ABIN3020597) at 1:10000 dilution. Lysates/proteins: 25 µg per lane. Blocking buffer: 3 % nonfat dry milk in TBST. Detection: ECL Basic Kit (RM00020). Exposure time: 90s.