

Datasheet for ABIN7269809
anti-RAB3A antibody (AA 100-200)

3 Images

[Go to Product page](#)

Overview

| | |
|----------------------|--|
| Quantity: | 100 µL |
| Target: | RAB3A |
| Binding Specificity: | AA 100-200 |
| Reactivity: | Human |
| Host: | Rabbit |
| Clonality: | Polyclonal |
| Conjugate: | This RAB3A antibody is un-conjugated |
| Application: | Western Blotting (WB), Immunofluorescence (IF) |

Product Details

| | |
|-------------------|---|
| Purpose: | RAB3A Rabbit pAb |
| Immunogen: | A synthetic peptide corresponding to a sequence within amino acids 100-200 of human RAB3A (NP_002857.1). |
| Sequence: | LMYDITNEES FNAVQDWSTQ IKTYSWDNAQ VLLVGNKCDM EDERVVSSER GRQLADHLGF EFFEASAKDN INVKQTFERL VDVCEKMSE SLDTADPAVT G |
| Isotype: | IgG |
| Cross-Reactivity: | Mouse, Rat |
| Characteristics: | Polyclonal Antibodies |
| Purification: | Affinity purification |

Target Details

| | |
|-------------------|--|
| Target: | RAB3A |
| Alternative Name: | RAB3A (RAB3A Products) |
| Background: | <p>Small GTP-binding protein that plays a central role in regulated exocytosis and secretion.</p> <p>Controls the recruitment, tethering and docking of secretory vesicles to the plasma membrane (By similarity. Upon stimulation, switches to its active GTP-bound form, cycles to vesicles and recruits effectors such as RIMS1, RIMS2, Rabphilin-3A/RPH3A, RPH3AL or SYTL4 to help the docking of vesicles onto the plasma membrane (By similarity. Upon GTP hydrolysis by GTPase-activating protein, dissociates from the vesicle membrane allowing the exocytosis to proceed (By similarity. Stimulates insulin secretion through interaction with RIMS2 or RPH3AL effectors in pancreatic beta cells (By similarity. Regulates calcium-dependent lysosome exocytosis and plasma membrane repair (PMR via the interaction with 2 effectors, SYTL4 and myosin-9/MYH9. Acts as a positive regulator of acrosome content secretion in sperm cells by interacting with RIMS1. Plays also a role in the regulation of dopamine release by interacting with synaptotagmin I/SYT (By similarity. Interacts with MADD (via uDENN domain, the GTP-bound form is preferred for interaction (By similarity.,RAB3A,Signal Transduction,G protein signaling,Signal Transduction,RAB3A</p> |
| Molecular Weight: | 24kDa |
| Gene ID: | 5864 |
| UniProt: | P20336 |
| Pathways: | Synaptic Membrane , Synaptic Vesicle Exocytosis , Dicarboxylic Acid Transport |

Application Details

| | |
|--------------------|-----------------------------------|
| Application Notes: | WB,1:500 - 1:2000,IF,1:50 - 1:200 |
| Restrictions: | For Research Use only |

Handling

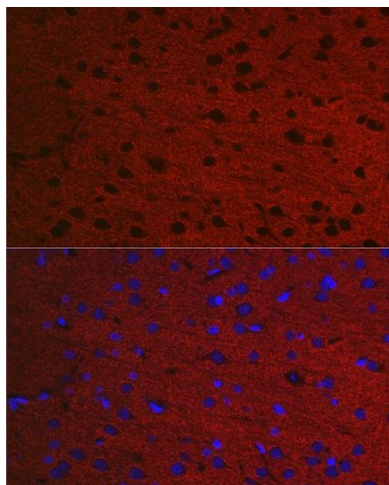
| | |
|--------------------|--|
| Format: | Liquid |
| Buffer: | PBS with 0.02 % sodium azide,50 % glycerol, pH 7.3. |
| Preservative: | Sodium azide |
| Precaution of Use: | This product contains Sodium azide: a POISONOUS AND HAZARDOUS SUBSTANCE which should be handled by trained staff only. |

Handling

Storage: -20 °C

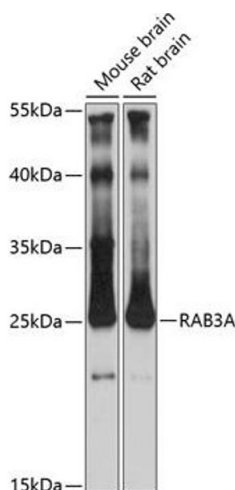
Storage Comment: Store at -20°C. Avoid freeze / thaw cycles.

Images



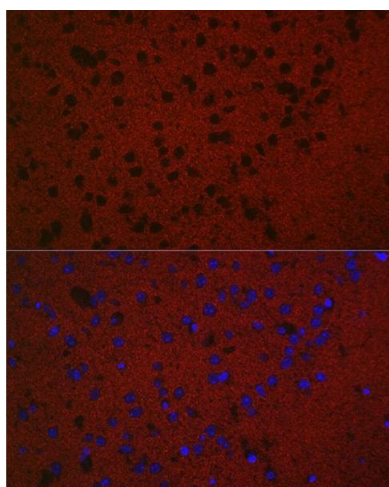
Immunofluorescence

Image 1. Immunofluorescence analysis of Rat brain using RA antibody (ABIN7269809) at dilution of 1:50. Blue: DAPI for nuclear staining.



Western Blotting

Image 2. Western blot analysis of extracts of various cell lines, using RA antibody (ABIN7269809) at 1:3000 dilution. Secondary antibody: HRP Goat Anti-Rabbit IgG (H+L) (ABIN1684268 and ABIN3020597) at 1:10000 dilution. Lysates/proteins: 25 µg per lane. Blocking buffer: 3 % nonfat dry milk in TBST. Detection: ECL Basic Kit (RM00020). Exposure time: 90s.



Immunofluorescence

Image 3. Immunofluorescence analysis of Mouse brain using RA antibody (ABIN7269809) at dilution of 1:50. Blue: DAPI for nuclear staining.