

Datasheet for ABIN7269821

**anti-RAD21 antibody****2** Images[Go to Product page](#)

## Overview

Quantity:	100 µL
Target:	RAD21
Reactivity:	Human
Host:	Rabbit
Clonality:	Monoclonal
Conjugate:	This RAD21 antibody is un-conjugated
Application:	Western Blotting (WB), Chromatin Immunoprecipitation (ChIP)

## Product Details

Purpose:	Rad21 Rabbit mAb
Immunogen:	A synthesized peptide derived from human Rad21
Isotype:	IgG
Cross-Reactivity:	Human, Mouse, Rat
Characteristics:	Monoclonal Antibodies
Purification:	Affinity purification

## Target Details

Target:	RAD21
Alternative Name:	RAD21 ( <a href="#">RAD21 Products</a> )
Background:	The protein encoded by this gene is highly similar to the gene product of Schizosaccharomyces

## Target Details

pombe rad21, a gene involved in the repair of DNA double-strand breaks, as well as in chromatid cohesion during mitosis. This protein is a nuclear phospho-protein, which becomes hyperphosphorylated in cell cycle M phase. The highly regulated association of this protein with mitotic chromatin specifically at the centromere region suggests its role in sister chromatid cohesion in mitotic cells. [provided by RefSeq, Jul 2008],CDLS4, HR21, HRAD21, MCD1, NXP1, SCC1, hHR21,Apoptosis,Cancer,Cell Biology & Developmental Biology,Cell Cycle,DNA Damage & Repair,Epigenetics & Nuclear Signaling,RAD21

Molecular Weight: kDa

Gene ID: 5885

UniProt: [O60216](#)

Pathways: [Positive Regulation of Endopeptidase Activity](#)

## Application Details

Application Notes: WB,1:500 - 1:2000,ChIP,1:50 - 1:200

Restrictions: For Research Use only

## Handling

Format: Liquid

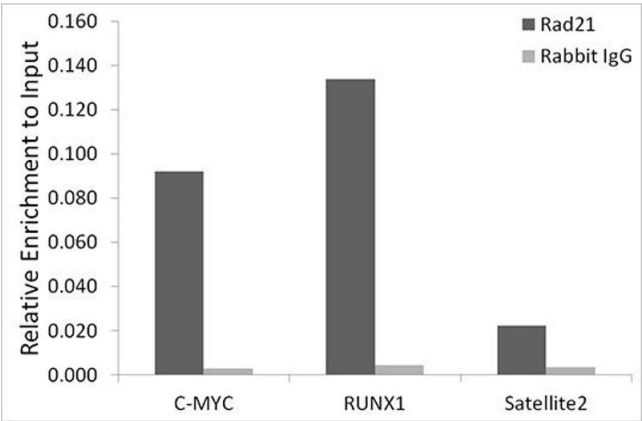
Buffer: PBS with 0.02 % sodium azide,0.05 % BSA,50 % glycerol, pH 7.3.

Preservative: Sodium azide

Precaution of Use: This product contains Sodium azide: a POISONOUS AND HAZARDOUS SUBSTANCE which should be handled by trained staff only.

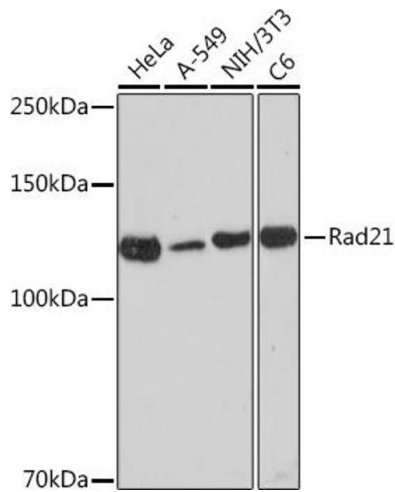
Storage: -20 °C

Storage Comment: Store at -20°C. Avoid freeze / thaw cycles.



### Chromatin Immunoprecipitation

**Image 1.** Chromatin immunoprecipitation analysis of extracts of A-549 cells, using Rad21 antibody (ABIN7269821) and rabbit IgG. The amount of immunoprecipitated DNA was checked by quantitative PCR. Histogram was constructed by the ratios of the immunoprecipitated DNA to the input.



### Western Blotting

**Image 2.** Western blot analysis of extracts of various cell lines, using Rad21 Rabbit mAb (ABIN7269821) at 1:1000 dilution. Secondary antibody: HRP Goat Anti-Rabbit IgG (H+L) (ABIN1684268 and ABIN3020597) at 1:10000 dilution. Lysates/proteins: 25 µg per lane. Blocking buffer: 3 % nonfat dry milk in TBST. Detection: ECL Enhanced Kit (RM00021). Exposure time: 180s.