

Datasheet for ABIN7269822

**anti-RAD21 antibody**

## 7 Images

[Go to Product page](#)

## Overview

Quantity:	100 µL
Target:	RAD21
Reactivity:	Human
Host:	Rabbit
Clonality:	Polyclonal
Conjugate:	This RAD21 antibody is un-conjugated
Application:	Western Blotting (WB), Immunohistochemistry (IHC), Immunofluorescence (IF), Immunoprecipitation (IP), Chromatin Immunoprecipitation (ChIP)

## Product Details

Purpose:	Rad21 Rabbit pAb
Immunogen:	Recombinant protein of human Rad21 .
Isotype:	IgG
Cross-Reactivity:	Human, Mouse, Rat
Characteristics:	Polyclonal Antibodies
Purification:	Affinity purification

## Target Details

Target:	RAD21
Alternative Name:	RAD21 ( <a href="#">RAD21 Products</a> )

## Target Details

Background: The protein encoded by this gene is highly similar to the gene product of *Schizosaccharomyces pombe rad21*, a gene involved in the repair of DNA double-strand breaks, as well as in chromatid cohesion during mitosis. This protein is a nuclear phospho-protein, which becomes hyperphosphorylated in cell cycle M phase. The highly regulated association of this protein with mitotic chromatin specifically at the centromere region suggests its role in sister chromatid cohesion in mitotic cells. [provided by RefSeq, Jul 2008], CDLS4, HR21, HRAD21, MCD1, NXP1, SCC1, hHR21, RAD21

Gene ID: 5885

UniProt: [O60216](#)

Pathways: [Positive Regulation of Endopeptidase Activity](#)

## Application Details

Application Notes: WB, 1:500 - 1:2000, IHC, 1:50 - 1:200, IF, 1:50 - 1:200, IP, 1:50 - 1:200, ChIP, 1:50 - 1:200

Restrictions: For Research Use only

## Handling

Format: Liquid

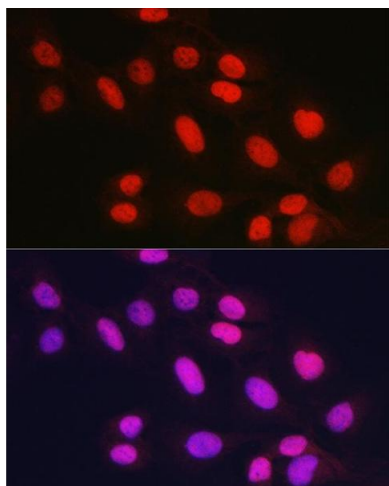
Buffer: PBS with 0.02 % sodium azide, 50 % glycerol, pH 7.3.

Preservative: Sodium azide

Precaution of Use: This product contains Sodium azide: a POISONOUS AND HAZARDOUS SUBSTANCE which should be handled by trained staff only.

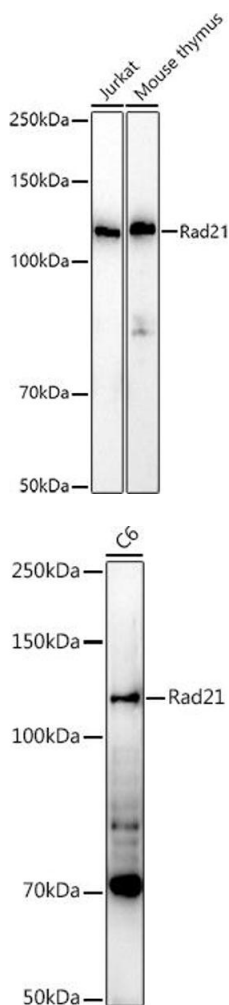
Storage: -20 °C

Storage Comment: Store at -20°C. Avoid freeze / thaw cycles.



#### Immunofluorescence

**Image 1.** Immunofluorescence analysis of U2OS cells using Rad21 Rabbit pAb (ABIN7269822) at dilution of 1:150 (40x lens). Blue: DAPI for nuclear staining.



#### Western Blotting

**Image 2.** Western blot analysis of extracts of various cell lines, using Rad21 antibody (ABIN7269822) at 1:1000 dilution. Secondary antibody: HRP Goat Anti-Rabbit IgG (H+L) (ABIN1684268 and ABIN3020597) at 1:10000 dilution. Lysates/proteins: 25 µg per lane. Blocking buffer: 3 % nonfat dry milk in TBST. Detection: ECL Basic Kit (RM00020). Exposure time: 10s.

#### Western Blotting

**Image 3.** Western blot analysis of extracts of C6 cells, using Rad21 antibody (ABIN7269822) at 1:1000 dilution. Secondary antibody: HRP Goat Anti-Rabbit IgG (H+L) (ABIN1684268 and ABIN3020597) at 1:10000 dilution. Lysates/proteins: 25 µg per lane. Blocking buffer: 3 % nonfat dry milk in TBST. Detection: ECL Enhanced Kit (RM00021). Exposure time: 90s.

Please check the [product details page](#) for more images. Overall 7 images are available for ABIN7269822.