



Datasheet for ABIN7269826
anti-RAD50 antibody



[Go to Product page](#)

2 Images

Overview

Quantity:	100 µL
Target:	RAD50
Reactivity:	Human
Host:	Rabbit
Clonality:	Monoclonal
Conjugate:	This RAD50 antibody is un-conjugated
Application:	Western Blotting (WB)

Product Details

Purpose:	Rad50 Rabbit mAb
Immunogen:	A synthesized peptide derived from human Rad50
Isotype:	IgG
Cross-Reactivity:	Human, Mouse, Rat
Characteristics:	Monoclonal Antibodies
Purification:	Affinity purification

Target Details

Target:	RAD50
Alternative Name:	RAD50 (RAD50 Products)
Background:	The protein encoded by this gene is highly similar to <i>Saccharomyces cerevisiae</i> Rad50, a

Target Details

protein involved in DNA double-strand break repair. This protein forms a complex with MRE11 and NBS1. The protein complex binds to DNA and displays numerous enzymatic activities that are required for nonhomologous joining of DNA ends. This protein, cooperating with its partners, is important for DNA double-strand break repair, cell cycle checkpoint activation, telomere maintenance, and meiotic recombination. Knockout studies of the mouse homolog suggest this gene is essential for cell growth and viability. Mutations in this gene are the cause of Nijmegen breakage syndrome-like disorder.[provided by RefSeq, Apr 2010],NBSLD, RAD502, hRad50,Cell Biology & Developmental Biology,Cell Cycle,DNA Damage & Repair,Epigenetics & Nuclear Signaling,G2/M DNA Damage Checkpoint,RAD50

Molecular Weight: 154kDa

Gene ID: 10111

UniProt: [Q92878](#)

Pathways: [DNA Damage Repair](#), [Protein targeting to Nucleus](#)

Application Details

Application Notes: WB,1:500 - 1:2000

Restrictions: For Research Use only

Handling

Format: Liquid

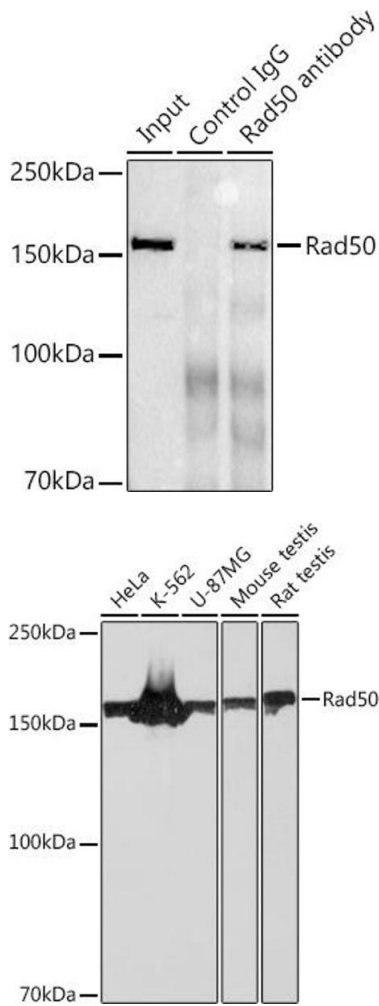
Buffer: PBS with 0.02 % sodium azide,0.05 % BSA,50 % glycerol, pH 7.3.

Preservative: Sodium azide

Precaution of Use: This product contains Sodium azide: a POISONOUS AND HAZARDOUS SUBSTANCE which should be handled by trained staff only.

Storage: -20 °C

Storage Comment: Store at -20°C. Avoid freeze / thaw cycles.



Immunoprecipitation

Image 1. Immunoprecipitation analysis of 300 µg extracts of K-562 cells using 3 µg Rad50 antibody (ABIN7269826). Western blot was performed from the immunoprecipitate using Rad50 antibody (ABIN7269826) at a dilution of 1:1000.

Western Blotting

Image 2. Western blot analysis of extracts of various cell lines, using Rad50 Rabbit mAb (ABIN7269826) at 1:1000 dilution. Secondary antibody: HRP Goat Anti-Rabbit IgG (H+L) (ABIN1684268 and ABIN3020597) at 1:10000 dilution. Lysates/proteins: 25 µg per lane. Blocking buffer: 3 % nonfat dry milk in TBST. Detection: ECL Basic Kit (RM00020). Exposure time: 30s.