



[Go to Product page](#)

Datasheet for ABIN7269850
anti-RAPGEF3 antibody

2 Images

Overview

Quantity:	100 µL
Target:	RAPGEF3
Reactivity:	Human
Host:	Rabbit
Clonality:	Monoclonal
Conjugate:	This RAPGEF3 antibody is un-conjugated
Application:	Western Blotting (WB), Immunohistochemistry (IHC)

Product Details

Purpose:	Epac1/RAPGEF3 Rabbit mAb
Immunogen:	A synthesized peptide derived from human Epac1/RAPGEF3
Isotype:	IgG
Cross-Reactivity:	Human, Mouse, Rat
Characteristics:	Monoclonal Antibodies
Purification:	Affinity purification

Target Details

Target:	RAPGEF3
Alternative Name:	RAPGEF3 (RAPGEF3 Products)
Background:	Guanine nucleotide exchange factor (GEF for RAP1A and RAP2A small GTPases that is

Target Details

activated by binding cAMP. Through simultaneous binding of PDE3B to RAPGEF3 and PIK3R6 is assembled in a signaling complex in which it activates the PI3K gamma complex and which is involved in angiogenesis. Plays a role in the modulation of the cAMP-induced dynamic control of endothelial barrier function through a pathway that is independent on Rho-mediated signaling. Required for the actin rearrangement at cell-cell junctions, such as stress fibers and junctional actin.,CAMP-GEFI, EPAC, EPAC1, HSU79275, bcm910,Endocrine & Metabolism,G protein signaling,G protein signaling_G-Protein-Coupled Receptors Signaling to MAPK/Erk,Immunology & Inflammation,MAPK-Erk Signaling Pathway,Signal Transduction,RAPGEF3

Molecular Weight: 104kDa

Gene ID: 10411

UniProt: [O95398](#)

Pathways: [cAMP Metabolic Process](#)

Application Details

Application Notes: WB,1:500 - 1:2000,IHC,1:50 - 1:200

Restrictions: For Research Use only

Handling

Format: Liquid

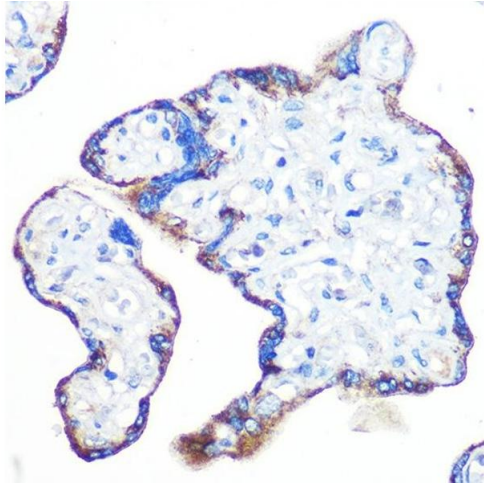
Buffer: PBS with 0.02 % sodium azide,0.05 % BSA,50 % glycerol, pH 7.3.

Preservative: Sodium azide

Precaution of Use: This product contains Sodium azide: a POISONOUS AND HAZARDOUS SUBSTANCE which should be handled by trained staff only.

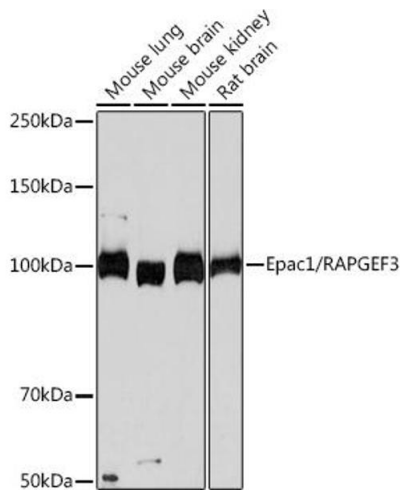
Storage: -20 °C

Storage Comment: Store at -20°C. Avoid freeze / thaw cycles.



Immunohistochemistry

Image 1. Immunohistochemistry of paraffin-embedded human placenta using Epac1/R Rabbit mAb (ABIN7269850) at dilution of 1:100 (40x lens). Perform microwave antigen retrieval with 10 mM PBS buffer pH 7.2 before commencing with IHC staining protocol.



Western Blotting

Image 2. Western blot analysis of extracts of various cell lines, using Epac1/R Rabbit mAb (ABIN7269850) at 1:1000 dilution. Secondary antibody: HRP Goat Anti-Rabbit IgG (H+L) (ABIN1684268 and ABIN3020597) at 1:10000 dilution. Lysates/proteins: 25 µg per lane. Blocking buffer: 3 % nonfat dry milk in TBST. Detection: ECL Basic Kit (RM00020). Exposure time: 60s.