



[Go to Product page](#)

Datasheet for ABIN7269852
anti-RIF1 antibody (AA 2173-2472)

1 Image

Overview

Quantity:	100 µL
Target:	RIF1
Binding Specificity:	AA 2173-2472
Reactivity:	Human
Host:	Rabbit
Clonality:	Polyclonal
Conjugate:	This RIF1 antibody is un-conjugated
Application:	Western Blotting (WB)

Product Details

Purpose:	RIF1 Rabbit pAb
Immunogen:	Recombinant fusion protein containing a sequence corresponding to amino acids 2173-2472 of human RIF1 (NP_060621.3).
Sequence:	PLASPSTSIL KRGLKRSQED EISSPVNKVR RVSFADPIYQ AGLADDIDRR CSIVRSHSSN SSPIGKSVKT SPTTQSKHNT TSAKGFLSPG SRSPKFKSSK KCLISEMAKE SIPCPTESVY PPLVNCVAPV DIILPQITSN MWARGLGQLI RAKNIKTIGD LSTLTASEIK TLPPIRSPKVS NVKKALRIYH EQQVKTRGLE EIPVFDISEK TVNGIENKSL SPDEERLVSD IIDPVALEIP LSKNLLAQIS ALALQLDSED LHNYSGSQLF EMHEKLSCMA NSVIKNLQSR WRSPSHENSI
Isotype:	IgG
Cross-Reactivity:	Human
Characteristics:	Polyclonal Antibodies

Product Details

Purification: Affinity purification

Target Details

Target: RIF1

Alternative Name: RIF1 ([RIF1 Products](#))

Background: This gene encodes a protein that shares homology with the yeast telomere binding protein, Rap1 interacting factor 1. This protein localizes to aberrant telomeres may be involved in DNA repair. Alternate splicing results in multiple transcript variants.,RIF1,Epigenetics & Nuclear Signaling,DNA Damage & Repair,RIF1

Molecular Weight: 271kDa/274kDa

Gene ID: 55183

UniProt: [Q5UIP0](#)

Pathways: [Stem Cell Maintenance](#)

Application Details

Application Notes: WB,1:500 - 1:2000

Restrictions: For Research Use only

Handling

Format: Liquid

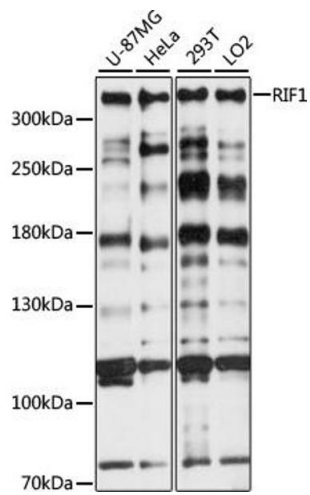
Buffer: PBS with 0.02 % sodium azide,50 % glycerol, pH 7.3.

Preservative: Sodium azide

Precaution of Use: This product contains Sodium azide: a POISONOUS AND HAZARDOUS SUBSTANCE which should be handled by trained staff only.

Storage: -20 °C

Storage Comment: Store at -20°C. Avoid freeze / thaw cycles.



Western Blotting

Image 1. Western blot analysis of extracts of various cell lines, using RIF1 antibody (ABIN7269852) at 1:1000 dilution. Secondary antibody: HRP Goat Anti-Rabbit IgG (H+L) (ABIN1684268 and ABIN3020597) at 1:10000 dilution. Lysates/proteins: 25 µg per lane. Blocking buffer: 3 % nonfat dry milk in TBST. Detection: ECL Basic Kit (RM00020). Exposure time: 30s.