



Datasheet for ABIN7269855
anti-RORB antibody



[Go to Product page](#)

1 Image

Overview

Quantity:	100 µL
Target:	RORB
Reactivity:	Human
Host:	Rabbit
Clonality:	Monoclonal
Conjugate:	This RORB antibody is un-conjugated
Application:	Western Blotting (WB)

Product Details

Purpose:	RORβ Rabbit mAb
Immunogen:	A synthesized peptide derived from human RORbeta
Isotype:	IgG
Cross-Reactivity:	Human, Mouse, Rat
Characteristics:	Monoclonal Antibodies
Purification:	Affinity purification

Target Details

Target:	RORB
Alternative Name:	RORB (RORB Products)
Background:	The protein encoded by this gene is a member of the NR1 subfamily of nuclear hormone

Target Details

receptors. It is a DNA-binding protein that can bind as a monomer or as a homodimer to hormone response elements upstream of several genes to enhance the expression of those genes. The encoded protein has been shown to interact with NM23-2, a nucleoside diphosphate kinase involved in organogenesis and differentiation, and to help regulate the expression of some genes involved in circadian rhythm. [provided by RefSeq, Feb 2014],NR1F2, ROR-BETA, RZR-BETA, RZRB, bA133M9.1,Cancer,Cell Biology & Developmental Biology,Cell Cycle,Cell Cycle_Cell differentiation,Epigenetics & Nuclear Signaling,Neuroscience,Nuclear Receptor Signaling,Nuclear Receptor Signaling_Nuclear hormone receptors,Signal Transduction,Transcription Factors,RORB

Molecular Weight: 53kDa

Gene ID: 6096

UniProt: [Q92753](#)

Pathways: [Nuclear Receptor Transcription Pathway](#), [Steroid Hormone Mediated Signaling Pathway](#)

Application Details

Application Notes: WB,1:500 - 1:2000

Restrictions: For Research Use only

Handling

Format: Liquid

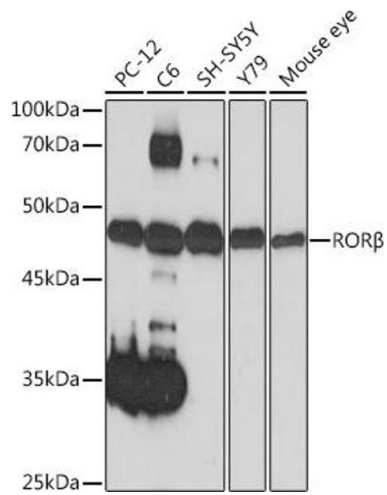
Buffer: PBS with 0.02 % sodium azide,0.05 % BSA,50 % glycerol, pH 7.3.

Preservative: Sodium azide

Precaution of Use: This product contains Sodium azide: a POISONOUS AND HAZARDOUS SUBSTANCE which should be handled by trained staff only.

Storage: -20 °C

Storage Comment: Store at -20°C. Avoid freeze / thaw cycles.



Western Blotting

Image 1. Western blot analysis of extracts of various cell lines, using ROR β Rabbit mAb (ABIN7269855) at 1:1000 dilution. Secondary antibody: HRP Goat Anti-Rabbit IgG (H+L) (ABIN1684268 and ABIN3020597) at 1:10000 dilution. Lysates/proteins: 25 μ g per lane. Blocking buffer: 3% nonfat dry milk in TBST. Detection: ECL Basic Kit (RM00020). Exposure time: 60s.