



[Go to Product page](#)

Datasheet for ABIN7269856
anti-RAPH1 antibody (AA 1-240)

3 Images

Overview

Quantity:	100 µL
Target:	RAPH1
Binding Specificity:	AA 1-240
Reactivity:	Human
Host:	Rabbit
Clonality:	Polyclonal
Conjugate:	This RAPH1 antibody is un-conjugated
Application:	Western Blotting (WB), Immunofluorescence (IF)

Product Details

Purpose:	RAPH1 Rabbit pAb
Immunogen:	Recombinant fusion protein containing a sequence corresponding to amino acids 1-240 of human RAPH1 (NP_998754.1).
Sequence:	MEQLSDEEID HGAEEDSDKE DQDLDKMFGA WLGELDKLTQ SLSDSKPMEP VKRSPLRQET NMANFSYRFS IYNLNEALNQ GETVDLDALM ADLCSIEQEL SSIGSGNSKR QITETKATQK LPVSRHTLKH GTLKGLSSSS NRIAKPSHAS YSLDDVTAQL EQASLSMDEA AQQSVLEDTK PLVTNQHRRT ASAGTVSDAE VHSISNSSHS SITSAASSMD SLDIDKVTRP QELDLTHQGQ
Isotype:	IgG
Cross-Reactivity:	Human, Mouse, Rat
Characteristics:	Polyclonal Antibodies

Product Details

Purification: Affinity purification

Target Details

Target: RAPH1

Alternative Name: RAPH1 ([RAPH1 Products](#))

Background: This gene encodes a protein that belongs to the Mig10/Rap1-interacting adaptor molecule/Lamellipodin family of adapter proteins, which function in cell migration. Members of this family contain pleckstrin-homology domains, Ras-association domains, and proline-rich C-termini. The protein encoded by this gene regulates actin dynamics through interaction with Ena/Vasodilator proteins as well as direct binding to filamentous actin to regulate actin network assembly. Alternative splicing results in multiple transcript variants.,RAPH1,ALS2CR18,ALS2CR9,LPD,PREL-2,PREL2,RMO1,RaIGDS/AF-6,Cell Biology & Developmental Biology,RAPH1

Molecular Weight: 66kDa/67kDa/69kDa/70kDa/72kDa/73kDa/135kDa

Gene ID: 65059

UniProt: [Q70E73](#)

Application Details

Application Notes: WB,1:200 - 1:2000,IF,1:50 - 1:200

Restrictions: For Research Use only

Handling

Format: Liquid

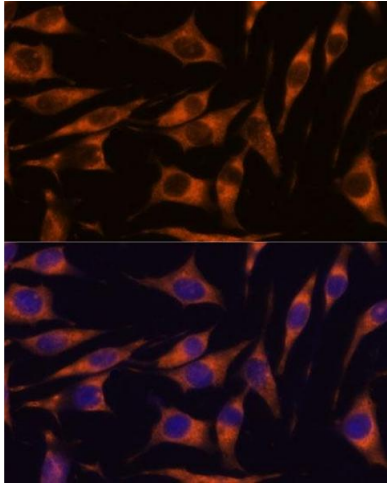
Buffer: PBS with 0.02 % sodium azide,50 % glycerol, pH 7.3.

Preservative: Sodium azide

Precaution of Use: This product contains Sodium azide: a POISONOUS AND HAZARDOUS SUBSTANCE which should be handled by trained staff only.

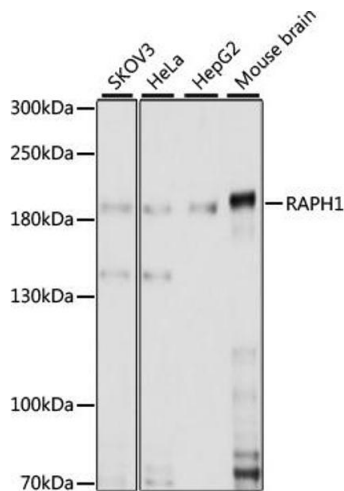
Storage: -20 °C

Storage Comment: Store at -20°C. Avoid freeze / thaw cycles.



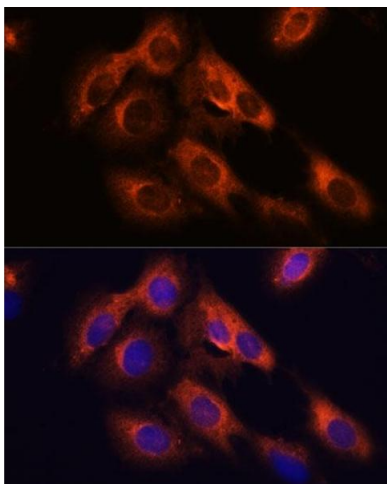
Immunofluorescence

Image 1. Immunofluorescence analysis of L929 cells using R antibody (ABIN7269856) at dilution of 1:100. Blue: DAPI for nuclear staining.



Western Blotting

Image 2. Western blot analysis of extracts of various cell lines, using R antibody (ABIN7269856) at 1:1000 dilution. Secondary antibody: HRP Goat Anti-Rabbit IgG (H+L) (ABIN1684268 and ABIN3020597) at 1:10000 dilution. Lysates/proteins: 25 µg per lane. Blocking buffer: 3 % nonfat dry milk in TBST. Detection: ECL Basic Kit (RM00020). Exposure time: 30s.



Immunofluorescence

Image 3. Immunofluorescence analysis of C6 cells using R antibody (ABIN7269856) at dilution of 1:100. Blue: DAPI for nuclear staining.