



[Go to Product page](#)

Datasheet for ABIN7269868
anti-RHOB antibody (C-Term)

1 Image

Overview

Quantity:	100 µL
Target:	RHOB
Binding Specificity:	C-Term
Reactivity:	Human
Host:	Rabbit
Clonality:	Polyclonal
Conjugate:	This RHOB antibody is un-conjugated
Application:	Western Blotting (WB), Immunoprecipitation (IP)

Product Details

Purpose:	RhoB Rabbit pAb
Immunogen:	A synthetic peptide corresponding to a sequence within amino acids 100 to the C-terminus of human RhoB (NP_004031.1).
Sequence:	VPEVKHFPCPN VPIILVANKK DLRSDHEVRT ELARMKQEPV RTDDGRAMAV RIQAYDYLEC SAKTKEGVRE VFETATRAAL QKRYGSQNGC INCCKVL
Isotype:	IgG
Cross-Reactivity:	Mouse
Characteristics:	Polyclonal Antibodies
Purification:	Affinity purification

Target Details

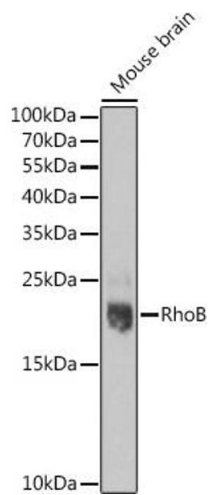
Target:	RHOB
Alternative Name:	RHOB (RHOB Products)
Background:	RHOB (ras homolog family member B) is a protein-coding gene. GO annotations related to this gene include GDP binding and GTP binding. An important paralog of this gene is RND1.,RHOB,ARH6,ARHB,MST081,MSTP081,RHOH6,Signal Transduction,G protein signaling,Signal Transduction,MAPK-JNK Signaling Pathway,Cell Biology & Developmental Biology,Apoptosis,Cytoskeleton,Microfilaments,Microtubules,Actins,Cardiovascular,Angiogenesis,RHOB
Molecular Weight:	22kDa
Gene ID:	388
UniProt:	P62745

Application Details

Application Notes:	WB,1:500 - 1:2000,IP,1:50 - 1:100
Restrictions:	For Research Use only

Handling

Format:	Liquid
Buffer:	PBS with 0.02 % sodium azide,50 % glycerol, pH 7.3.
Preservative:	Sodium azide
Precaution of Use:	This product contains Sodium azide: a POISONOUS AND HAZARDOUS SUBSTANCE which should be handled by trained staff only.
Storage:	-20 °C
Storage Comment:	Store at -20°C. Avoid freeze / thaw cycles.



Western Blotting

Image 1. Western blot analysis of extracts of Mouse brain, using RhoB pAb at 1:1000 dilution. Secondary antibody: HRP Goat Anti-Rabbit IgG (H+L) (ABIN1684268 and ABIN3020597) at 1:10000 dilution. Lysates/proteins: 25 µg per lane. Blocking buffer: 3 % nonfat dry milk in TBST. Detection: ECL Basic Kit (RM00020). Exposure time: 90s.