



[Go to Product page](#)

Datasheet for ABIN7269882
anti-RCCD1 antibody (AA 230-360)

1 Image

Overview

Quantity:	100 µL
Target:	RCCD1
Binding Specificity:	AA 230-360
Reactivity:	Human
Host:	Rabbit
Clonality:	Polyclonal
Conjugate:	This RCCD1 antibody is un-conjugated
Application:	Western Blotting (WB)

Product Details

Purpose:	RCCD1 Rabbit pAb
Immunogen:	Recombinant fusion protein containing a sequence corresponding to amino acids 230-360 of human RCCD1 (NP_001017919.1).
Sequence:	DIYIWGWNES GQLALPTRNL AEDGETVARE ATELNEDGSQ VKRTGGAEDG APAPFIAVQP FPALLDLPMG SDAVKASCGS RHTAVVTRTG ELYTWGWGKY GQLGHEDTTS LDRPRRVEYF VDKQLQVKAV T
Isotype:	IgG
Cross-Reactivity:	Human, Rat
Characteristics:	Polyclonal Antibodies
Purification:	Affinity purification

Target Details

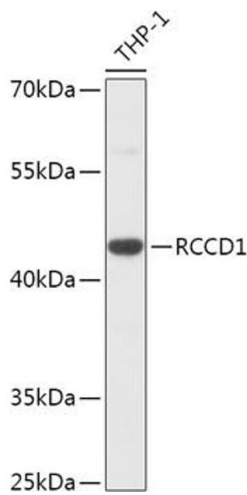
Target:	RCCD1
Alternative Name:	RCCD1 (RCCD1 Products)
Background:	Plays a role in transcriptional repression of satellite repeats, possibly by regulating H3K36 methylation levels in centromeric regions together with KDM8. Possibly together with KDM8, is involved in proper mitotic spindle organization and chromosome segregation. Plays a role in regulating alpha-tubulin deacetylation and cytoskeletal microtubule stability, thereby promoting cell migration and TGF-beta-induced epithelial to mesenchymal transition (EMT, potentially through the inhibition of KDM8.,RCCD1,Cell Biology & Developmental Biology,RCCD1
Gene ID:	91433
UniProt:	A6NED2

Application Details

Application Notes:	WB,1:500 - 1:2000
Restrictions:	For Research Use only

Handling

Format:	Liquid
Buffer:	PBS with 0.02 % sodium azide,50 % glycerol, pH 7.3.
Preservative:	Sodium azide
Precaution of Use:	This product contains Sodium azide: a POISONOUS AND HAZARDOUS SUBSTANCE which should be handled by trained staff only.
Storage:	-20 °C
Storage Comment:	Store at -20°C. Avoid freeze / thaw cycles.



Western Blotting

Image 1. Western blot analysis of extracts of THP-1 cells, using RCCD1 antibody (ABIN7269882) at 1:1000 dilution. Secondary antibody: HRP Goat Anti-Rabbit IgG (H+L) (ABIN1684268 and ABIN3020597) at 1:10000 dilution. Lysates/proteins: 25 µg per lane. Blocking buffer: 3 % nonfat dry milk in TBST. Detection: ECL Basic Kit (RM00020). Exposure time: 90s.