

Datasheet for ABIN7269888
anti-ROR2 antibody



[Go to Product page](#)

1 Image

Overview

Quantity:	100 µL
Target:	ROR2
Reactivity:	Human
Host:	Rabbit
Clonality:	Monoclonal
Conjugate:	This ROR2 antibody is un-conjugated
Application:	Western Blotting (WB)

Product Details

Purpose:	ROR2 Rabbit mAb
Immunogen:	A synthesized peptide derived from human ROR2
Isotype:	IgG
Cross-Reactivity:	Mouse
Characteristics:	Monoclonal Antibodies
Purification:	Affinity purification

Target Details

Target:	ROR2
Alternative Name:	ROR2 (ROR2 Products)
Background:	The protein encoded by this gene is a receptor protein tyrosine kinase and type I

Target Details

transmembrane protein that belongs to the ROR subfamily of cell surface receptors. The protein may be involved in the early formation of the chondrocytes and may be required for cartilage and growth plate development. Mutations in this gene can cause brachydactyly type B, a skeletal disorder characterized by hypoplasia/aplasia of distal phalanges and nails. In addition, mutations in this gene can cause the autosomal recessive form of Robinow syndrome, which is characterized by skeletal dysplasia with generalized limb bone shortening, segmental defects of the spine, brachydactyly, and a dysmorphic facial appearance. [provided by RefSeq, Jul 2008],BDB, BDB1, NTRKR2,Cell Biology & Developmental Biology,Cytoskeleton,Extracellular Matrix,Extracellular Matrix_Bone,Kinase,Kinase_Tyrosine kinases,Mesenchymal Stem Cells,Signal Transduction,Stem Cells,ROR2

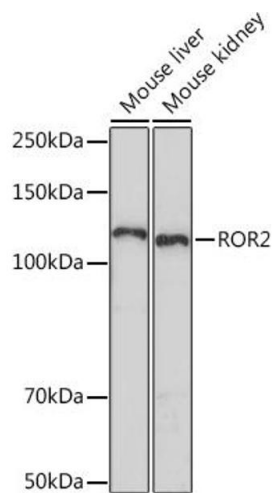
Molecular Weight:	105kDa
Gene ID:	4920
UniProt:	Q01974
Pathways:	RTK Signaling , WNT Signaling

Application Details

Application Notes:	WB,1:500 - 1:2000
Restrictions:	For Research Use only

Handling

Format:	Liquid
Buffer:	PBS with 0.02 % sodium azide,0.05 % BSA,50 % glycerol, pH 7.3.
Preservative:	Sodium azide
Precaution of Use:	This product contains Sodium azide: a POISONOUS AND HAZARDOUS SUBSTANCE which should be handled by trained staff only.
Storage:	-20 °C
Storage Comment:	Store at -20°C. Avoid freeze / thaw cycles.



Western Blotting

Image 1. Western blot analysis of extracts of various cell lines, using ROR2 Rabbit mAb (ABIN7269888) at 1:1000 dilution. Secondary antibody: HRP Goat Anti-Rabbit IgG (H+L) (ABIN1684268 and ABIN3020597) at 1:10000 dilution. Lysates/proteins: 25 µg per lane. Blocking buffer: 3 % nonfat dry milk in TBST. Detection: ECL Enhanced Kit (RM00021). Exposure time: 90s.