

Datasheet for ABIN7269906  
**anti-Relaxin 1 antibody (AA 1-100)**[Go to Product page](#)

## 1 Image

## Overview

Quantity:	100 µL
Target:	Relaxin 1 (RLN1)
Binding Specificity:	AA 1-100
Reactivity:	Human
Host:	Rabbit
Clonality:	Polyclonal
Conjugate:	This Relaxin 1 antibody is un-conjugated
Application:	Western Blotting (WB)

## Product Details

Purpose:	RLN1 Rabbit pAb
Immunogen:	A synthetic peptide corresponding to a sequence within amino acids 1-100 of human RLN1 (NP_008842.1).
Sequence:	MPRLFLFHLL EFCLLLNQFS RAVAAKWKDD VIKLCGRELV RAQIAICGMS TWSKRSLSQE DAPQTPRPVA EIVPSFINKD TETIIIMLEF IANLPPELKA
Isotype:	IgG
Cross-Reactivity:	Human
Characteristics:	Polyclonal Antibodies
Purification:	Affinity purification

## Target Details

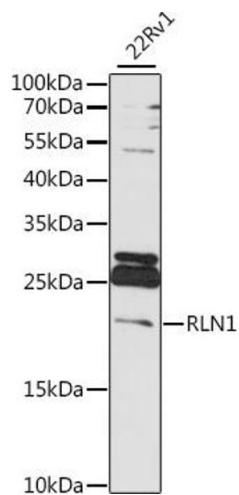
Target:	Relaxin 1 (RLN1)
Alternative Name:	RLN1 ( <a href="#">RLN1 Products</a> )
Background:	Relaxins are known endocrine and autocrine/paracrine hormones, belonging to the insulin gene superfamily. In humans there are three non-allelic relaxin genes, RLN1, RLN2 and RLN3, where RLN1 and RLN2 share high sequence homology. The protein encoded by this gene is synthesized as a single-chain polypeptide but the active form consists of an A chain and a B chain linked by disulfide bonds. Relaxin is produced by the ovary, and targets the mammalian reproductive system to ripen the cervix, elongate the pubic symphysis and inhibit uterine contraction. It may have additional roles in enhancing sperm motility, regulating blood pressure, controlling heart rate and releasing oxytocin and vasopressin.,RLN1,H1,H1RLX,RLXH1,bA12D24.3.1,bA12D24.3.2,relaxin 1,RLN1
Molecular Weight:	13kDa/21kDa
Gene ID:	6013
UniProt:	<a href="#">P04808</a>

## Application Details

Application Notes:	WB,1:500 - 1:2000
Restrictions:	For Research Use only

## Handling

Format:	Liquid
Buffer:	PBS with 0.02 % sodium azide,50 % glycerol, pH 7.3.
Preservative:	Sodium azide
Precaution of Use:	This product contains Sodium azide: a POISONOUS AND HAZARDOUS SUBSTANCE which should be handled by trained staff only.
Storage:	-20 °C
Storage Comment:	Store at -20°C. Avoid freeze / thaw cycles.



#### Western Blotting

**Image 1.** Western blot analysis of extracts of 22Rv1 cells, using RLN1 antibody (ABIN7269906) at 1:1000 dilution. Secondary antibody: HRP Goat Anti-Rabbit IgG (H+L) (ABIN1684268 and ABIN3020597) at 1:10000 dilution. Lysates/proteins: 25 µg per lane. Blocking buffer: 3 % nonfat dry milk in TBST. Detection: ECL Basic Kit (RM00020). Exposure time: 90s.