



[Go to Product page](#)

Datasheet for ABIN7269911
anti-RELT antibody (AA 26-162)

1 Image

Overview

Quantity:	100 µL
Target:	RELT
Binding Specificity:	AA 26-162
Reactivity:	Human
Host:	Rabbit
Clonality:	Polyclonal
Conjugate:	This RELT antibody is un-conjugated
Application:	Western Blotting (WB)

Product Details

Purpose:	RELT Rabbit pAb
Immunogen:	Recombinant fusion protein containing a sequence corresponding to amino acids 26-162 of human RELT (NP_116260.2).
Sequence:	STTLWQCPPG EEPDLDPGQG TLCRPCPPGT FSAAWGSSPC QPHARCSLWR RLEAQVGMAT RDTLCGDCWP GWFGPWGVPR VPCQPCSWAP LGTHGCDEWG RRARRGVEVA AGASSGGETR QPGNGTRAGG PEETAAQ
Isotype:	IgG
Cross-Reactivity:	Human, Mouse, Rat
Characteristics:	Polyclonal Antibodies
Purification:	Affinity purification

Target Details

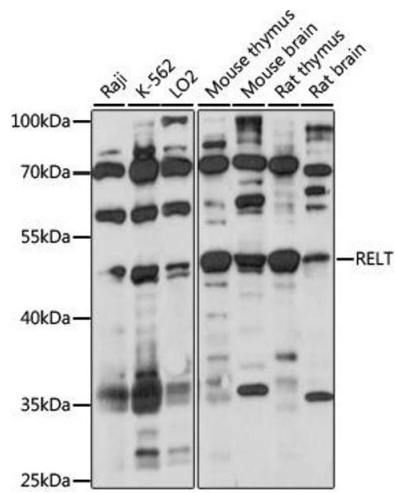
Target:	RELT
Alternative Name:	RELT (RELT Products)
Background:	The protein encoded by this gene is a member of the TNF-receptor superfamily. This receptor is especially abundant in hematologic tissues. It has been shown to activate the NF-kappaB pathway and selectively bind TNF receptor-associated factor 1 (TRAF1). This receptor is capable of stimulating T-cell proliferation in the presence of CD3 signaling, which suggests its regulatory role in immune response. Two alternatively spliced transcript variants of this gene encoding the same protein have been reported.,RELT,TNFRSF19L,TRLT,Signal Transduction,RELT
Molecular Weight:	46kDa
Gene ID:	84957
UniProt:	Q969Z4

Application Details

Application Notes:	WB,1:200 - 1:2000
Restrictions:	For Research Use only

Handling

Format:	Liquid
Buffer:	PBS with 0.02 % sodium azide,50 % glycerol, pH 7.3.
Preservative:	Sodium azide
Precaution of Use:	This product contains Sodium azide: a POISONOUS AND HAZARDOUS SUBSTANCE which should be handled by trained staff only.
Storage:	-20 °C
Storage Comment:	Store at -20°C. Avoid freeze / thaw cycles.



Western Blotting

Image 1. Western blot analysis of extracts of various cell lines, using RELT antibody (ABIN7269911) at 1:1000 dilution. Secondary antibody: HRP Goat Anti-Rabbit IgG (H+L) (ABIN1684268 and ABIN3020597) at 1:10000 dilution. Lysates/proteins: 25 µg per lane. Blocking buffer: 3 % nonfat dry milk in TBST. Detection: ECL Basic Kit (RM00020). Exposure time: 60S.