



[Go to Product page](#)

Datasheet for ABIN7269918
anti-RETNLB antibody (AA 1-111)

1 Image

Overview

Quantity:	100 µL
Target:	RETNLB
Binding Specificity:	AA 1-111
Reactivity:	Human
Host:	Rabbit
Clonality:	Polyclonal
Conjugate:	This RETNLB antibody is un-conjugated
Application:	Western Blotting (WB)

Product Details

Purpose:	RETNLB Rabbit pAb
Immunogen:	Recombinant fusion protein containing a sequence corresponding to amino acids 1-111 of human RETNLB (NP_115968.1).
Sequence:	MGPSSCLLLI LIPLLQLINP GSTQCSLDSV MDKKIKDVLN SLEYSPPISP KKLSCASVKS QGRPSSCPAG MAVTGCACGY GCGSWDVQLE TTCHCQCSVV DWTTARCCHL T
Isotype:	IgG
Cross-Reactivity:	Rat
Characteristics:	Polyclonal Antibodies
Purification:	Affinity purification

Target Details

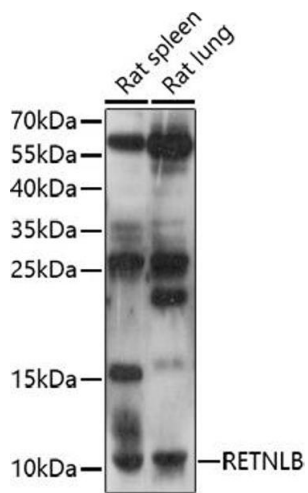
Target:	RETNLB
Alternative Name:	RETNLB (RETNLB Products)
Background:	Probable hormone.,RETNLB,FIZZ1,FIZZ2,HXCP2,RELM-beta,RELMb,RELMbeta,XCP2,Cancer,Signal Transduction,Cell Biology & Developmental Biology,Growth factor,RETNLB
Gene ID:	84666
UniProt:	Q9BQ08
Pathways:	Hormone Activity

Application Details

Application Notes:	WB,1:500 - 1:2000
Restrictions:	For Research Use only

Handling

Format:	Liquid
Buffer:	PBS with 0.02 % sodium azide,50 % glycerol, pH 7.3.
Preservative:	Sodium azide
Precaution of Use:	This product contains Sodium azide: a POISONOUS AND HAZARDOUS SUBSTANCE which should be handled by trained staff only.
Storage:	-20 °C
Storage Comment:	Store at -20°C. Avoid freeze / thaw cycles.



Western Blotting

Image 1. Western blot analysis of extracts of various cell lines, using RETNLB antibody (ABIN7269918) at 1:1000 dilution. Secondary antibody: HRP Goat Anti-Rabbit IgG (H+L) (ABIN1684268 and ABIN3020597) at 1:10000 dilution. Lysates/proteins: 25 µg per lane. Blocking buffer: 3 % nonfat dry milk in TBST. Detection: ECL Basic Kit (RM00020). Exposure time: 90s.