

Datasheet for ABIN7269925

**anti-Ret Proto-Oncogene antibody**

## 4 Images

[Go to Product page](#)

## Overview

Quantity:	100 µL
Target:	Ret Proto-Oncogene (RET)
Reactivity:	Human
Host:	Rabbit
Clonality:	Monoclonal
Conjugate:	This Ret Proto-Oncogene antibody is un-conjugated
Application:	Western Blotting (WB)

## Product Details

Purpose:	Ret Rabbit mAb
Immunogen:	Recombinant protein of human Ret.
Isotype:	IgG
Cross-Reactivity:	Human, Mouse, Rat
Characteristics:	Monoclonal Antibodies
Purification:	Affinity purification

## Target Details

Target:	Ret Proto-Oncogene (RET)
Alternative Name:	Ret ( <a href="#">RET Products</a> )
Background:	This gene, a member of the cadherin superfamily, encodes one of the receptor tyrosine kinases,

## Target Details

which are cell-surface molecules that transduce signals for cell growth and differentiation. This gene plays a crucial role in neural crest development, and it can undergo oncogenic activation in vivo and in vitro by cytogenetic rearrangement. Mutations in this gene are associated with the disorders multiple endocrine neoplasia, type IIA, multiple endocrine neoplasia, type IIB, Hirschsprung disease, and medullary thyroid carcinoma. Two transcript variants encoding different isoforms have been found for this gene. Additional transcript variants have been described but their biological validity has not been confirmed.,RET,CDHF12,CDHR16,HSCR1,MEN2A,MEN2B,MTC1,PTC,RET-ELE1,RET51,Cancer,Signal Transduction,Kinase,Tyrosine kinases,Cell Biology & Developmental Biology,Growth factor,Ret

Molecular Weight: 119kDa/124kDa

Gene ID: 5979

UniProt: [P07949](#)

Pathways: [RTK Signaling](#), [Dopaminergic Neurogenesis](#), [Regulation of Cell Size](#), [Tube Formation](#)

## Application Details

Application Notes: WB,1:500 - 1:2000

Restrictions: For Research Use only

## Handling

Format: Liquid

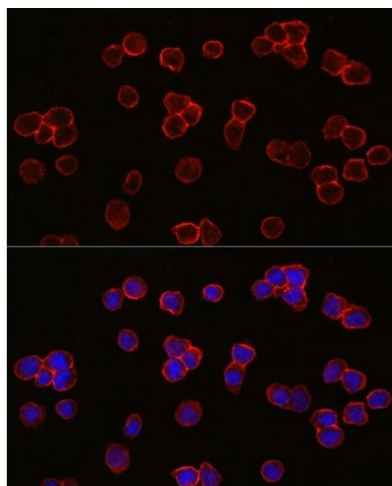
Buffer: PBS with 0.02 % sodium azide,50 % glycerol, pH 7.3.

Preservative: Sodium azide

Precaution of Use: This product contains Sodium azide: a POISONOUS AND HAZARDOUS SUBSTANCE which should be handled by trained staff only.

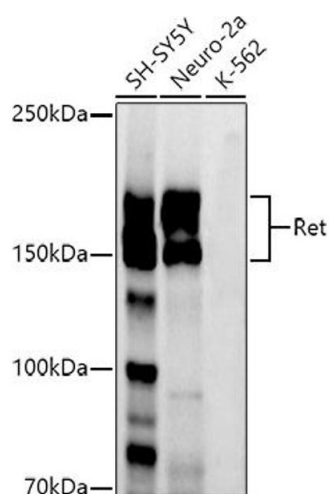
Storage: -20 °C

Storage Comment: Store at -20°C. Avoid freeze / thaw cycles.



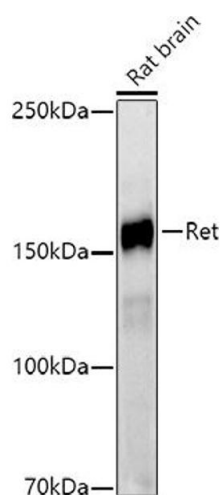
### Immunofluorescence

**Image 1.** Immunofluorescence analysis of THP-1 cells using Ret Rabbit mAb (ABIN7269925) at dilution of 1:100 (40x lens). Blue: DAPI for nuclear staining.



### Western Blotting

**Image 2.** Western blot analysis of extracts of various cell lines, using Ret antibody (ABIN7269925) at 1:1000 dilution. Secondary antibody: HRP Goat Anti-Rabbit IgG (H+L) (ABIN1684268 and ABIN3020597) at 1:10000 dilution. Lysates/proteins: 25 µg per lane. Blocking buffer: 3 % nonfat dry milk in TBST. Detection: ECL Basic Kit (RM00020). Exposure time: 90s.



### Western Blotting

**Image 3.** Western blot analysis of extracts of Rat brain, using Ret antibody (ABIN7269925) at 1:1000 dilution. Secondary antibody: HRP Goat Anti-Rabbit IgG (H+L) (ABIN1684268 and ABIN3020597) at 1:10000 dilution. Lysates/proteins: 25 µg per lane. Blocking buffer: 3 % nonfat dry milk in TBST. Detection: ECL Basic Kit (RM00020). Exposure time: 180s.

Please check the [product details page](#) for more images. Overall 4 images are available for ABIN7269925.