

Datasheet for ABIN7269933

anti-RPE65 antibody

5 Images

[Go to Product page](#)

Overview

Quantity:	100 µL
Target:	RPE65
Reactivity:	Human
Host:	Rabbit
Clonality:	Monoclonal
Conjugate:	This RPE65 antibody is un-conjugated
Application:	Western Blotting (WB), Immunohistochemistry (IHC), Immunofluorescence (IF)

Product Details

Purpose:	RPE65 Rabbit mAb
Immunogen:	A synthesized peptide derived from human RPE65
Isotype:	IgG
Cross-Reactivity:	Human, Mouse, Rat
Characteristics:	Monoclonal Antibodies
Purification:	Affinity purification

Target Details

Target:	RPE65
Alternative Name:	RPE65 (RPE65 Products)
Background:	This gene encodes a protein which is located in the retinal pigment epithelium and is involved in

Target Details

the production of 11-cis retinal and in visual pigment regeneration. There are two forms of this protein, a soluble form called sRPE65, and a palmitoylated, membrane-bound form known as mRPE65. mRPE65 serves as the palmitoyl donor for lecithin retinol acyl transferase (LRAT), the enzyme that catalyzes the vitamin A to all trans retinol step of the chromophore regeneration process. Both mRPE65 and sRPE65 also serve as regulatory proteins, with the ratio and concentrations of these molecules playing a role in the inhibition of 11-cis retinal synthesis. Mutations in this gene have been associated with Leber congenital amaurosis type 2 (LCA2) and retinitis pigmentosa. [provided by RefSeq, Jul 2008],BCO3, LCA2, RP20, mRPE65, rd12, sRPE65,Cancer,Cell Type Marker,Endocrine & Metabolism,Neuroscience,Signal Transduction,RPE65

Molecular Weight: 61kDa

Gene ID: 6121

UniProt: [Q16518](#)

Application Details

Application Notes: WB,1:500 - 1:2000,IHC,1:50 - 1:200,IF,1:50 - 1:200

Restrictions: For Research Use only

Handling

Format: Liquid

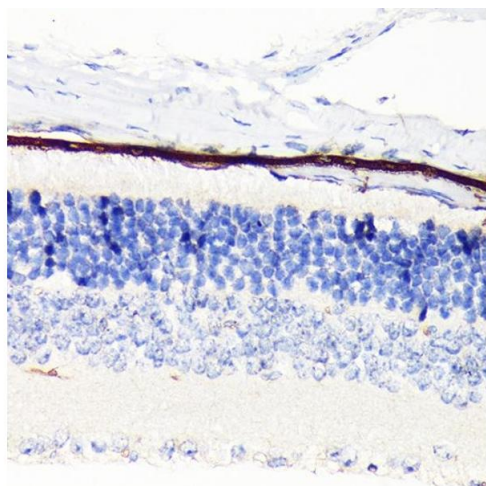
Buffer: PBS with 0.02 % sodium azide,0.05 % BSA,50 % glycerol, pH 7.3.

Preservative: Sodium azide

Precaution of Use: This product contains Sodium azide: a POISONOUS AND HAZARDOUS SUBSTANCE which should be handled by trained staff only.

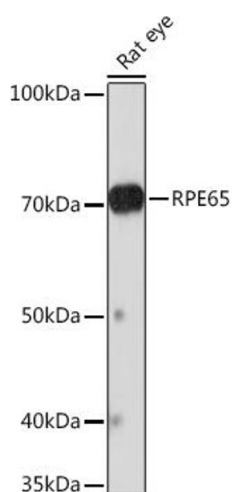
Storage: -20 °C

Storage Comment: Store at -20°C. Avoid freeze / thaw cycles.



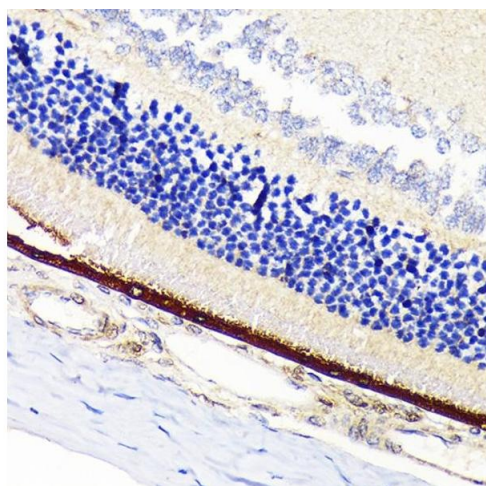
Immunohistochemistry

Image 1. Immunohistochemistry of paraffin-embedded mouse retina using RPE65 Rabbit mAb (ABIN7269933) at dilution of 1:100 (40x lens). Perform microwave antigen retrieval with 10 mM Tris/EDTA buffer pH 9.0 before commencing with IHC staining protocol.



Western Blotting

Image 2. Western blot analysis of extracts of Rat eye, using RPE65 Rabbit mAb (ABIN7269933) at 1:1000 dilution. Secondary antibody: HRP Goat Anti-Rabbit IgG (H+L) (ABIN1684268 and ABIN3020597) at 1:10000 dilution. Lysates/proteins: 25 µg per lane. Blocking buffer: 3 % nonfat dry milk in TBST. Detection: ECL Basic Kit (RM00020). Exposure time: 3 min.



Immunohistochemistry

Image 3. Immunohistochemistry of paraffin-embedded rat retina using RPE65 Rabbit mAb (ABIN7269933) at dilution of 1:100 (40x lens). Perform microwave antigen retrieval with 10 mM Tris/EDTA buffer pH 9.0 before commencing with IHC staining protocol.

Please check the [product details page](#) for more images. Overall 5 images are available for ABIN7269933.