



Datasheet for ABIN7269945 anti-RAI14 antibody (AA 300-600)



[Go to Product page](#)

1 Image

Overview

Quantity:	100 µL
Target:	RAI14
Binding Specificity:	AA 300-600
Reactivity:	Human
Host:	Rabbit
Clonality:	Polyclonal
Conjugate:	This RAI14 antibody is un-conjugated
Application:	Western Blotting (WB)

Product Details

Purpose:	RAI14 Rabbit pAb
Immunogen:	Recombinant fusion protein containing a sequence corresponding to amino acids 300-600 of human RAI14 (NP_056392.2).
Sequence:	SGKESVFFAE PPFKAEISSI RENKDRLSDS TTGADSLLDI SSEADQQDLL SLLQAKVASL TLHNKELQDK LQAKSPKEAE ADLSFDSYHS TQTDLGPSLG KPGETSPPDS KSSPSVLIHS LGKSTTDNDV RIQQLQEILQ DLQKRLESSE AERKQLQVEL QSRRAELVCL NNTEISENSS DLSQKLKETQ SKYEEAMKEV LSVQKQMKLG LVSPESMDNY SHFHRLRVTE EEINVLKQDL QNALEESERN KEKVRELEEK LVEREKGTVI KPPVEEYEEM KSSYCSVIEN MNKEKAFLFE K
Isotype:	IgG
Cross-Reactivity:	Mouse, Rat
Characteristics:	Polyclonal Antibodies

Product Details

Purification: Affinity purification

Target Details

Target: RAI14

Alternative Name: RAI14 ([RAI14 Products](#))

Background: Plays a role in actin regulation at the ectoplasmic specialization, a type of cell junction specific to testis. Important for establishment of sperm polarity and normal spermatid adhesion. May also promote integrity of Sertoli cell tight junctions at the blood-testis barrier.,RAI14,NORPEG,RAI13,Cell Biology & Developmental Biology,RAI14

Molecular Weight: 106kDa/109kDa/110kDa

Gene ID: 26064

UniProt: [Q9P0K7](#)

Application Details

Application Notes: WB,1:500 - 1:2000

Restrictions: For Research Use only

Handling

Format: Liquid

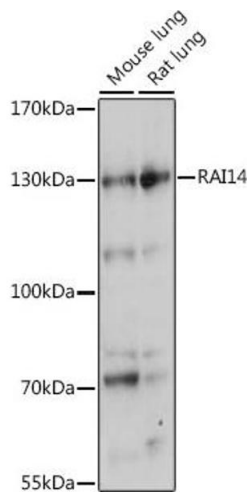
Buffer: PBS with 0.02 % sodium azide,50 % glycerol, pH 7.3.

Preservative: Sodium azide

Precaution of Use: This product contains Sodium azide: a POISONOUS AND HAZARDOUS SUBSTANCE which should be handled by trained staff only.

Storage: -20 °C

Storage Comment: Store at -20°C. Avoid freeze / thaw cycles.



Western Blotting

Image 1. Western blot analysis of extracts of various cell lines, using R antibody (ABIN7269945) at 1:1000 dilution. Secondary antibody: HRP Goat Anti-Rabbit IgG (H+L) (ABIN1684268 and ABIN3020597) at 1:10000 dilution. Lysates/proteins: 25 µg per lane. Blocking buffer: 3 % nonfat dry milk in TBST. Detection: ECL Basic Kit (RM00020). Exposure time: 10s.