

Datasheet for ABIN7269951

anti-RBP4 antibody

4 Images

[Go to Product page](#)

Overview

Quantity:	100 µL
Target:	RBP4
Reactivity:	Human
Host:	Rabbit
Clonality:	Monoclonal
Conjugate:	This RBP4 antibody is un-conjugated
Application:	Western Blotting (WB), Immunofluorescence (IF)

Product Details

Purpose:	RBP4 Rabbit mAb
Immunogen:	A synthesized peptide derived from human RBP4
Isotype:	IgG
Cross-Reactivity:	Human, Mouse, Rat
Characteristics:	Monoclonal Antibodies
Purification:	Affinity purification

Target Details

Target:	RBP4
Alternative Name:	RBP4 (RBP4 Products)
Background:	This protein belongs to the lipocalin family and is the specific carrier for retinol (vitamin A

Target Details

alcohol) in the blood. It delivers retinol from the liver stores to the peripheral tissues. In plasma, the RBP-retinol complex interacts with transthyretin which prevents its loss by filtration through the kidney glomeruli. A deficiency of vitamin A blocks secretion of the binding protein posttranslationally and results in defective delivery and supply to the epidermal cells. [provided by RefSeq, Jul 2008],MCOPCB10, RDCCAS,Blood,Blood_Serum
Proteins,Cancer,Cardiovascular,Cardiovascular diseases,Cardiovascular diseases_Heart disease,Endocrine & Metabolism,Endocrine and metabolic diseases,Endocrine and metabolic diseases_Diabetes,Heart,Signal Transduction,RBP4

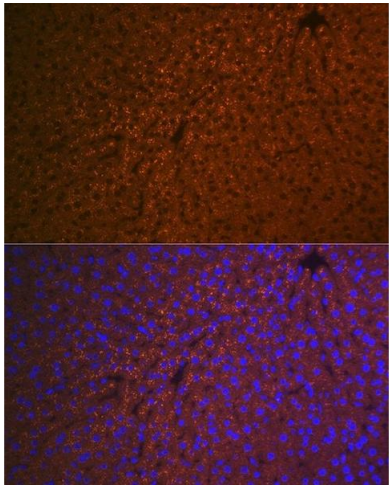
Molecular Weight:	23kDa
Gene ID:	5950
UniProt:	P02753
Pathways:	Regulatory RNA Pathways , Positive Regulation of Peptide Hormone Secretion , Carbohydrate Homeostasis , Production of Molecular Mediator of Immune Response

Application Details

Application Notes:	WB,1:500 - 1:2000,IF,1:50 - 1:200
Restrictions:	For Research Use only

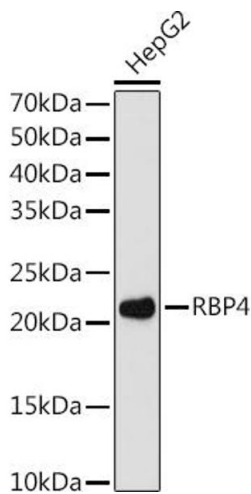
Handling

Format:	Liquid
Buffer:	PBS with 0.02 % sodium azide,0.05 % BSA,50 % glycerol, pH 7.3.
Preservative:	Sodium azide
Precaution of Use:	This product contains Sodium azide: a POISONOUS AND HAZARDOUS SUBSTANCE which should be handled by trained staff only.
Storage:	-20 °C
Storage Comment:	Store at -20°C. Avoid freeze / thaw cycles.



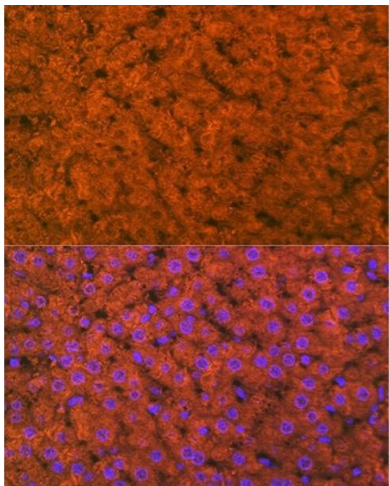
Immunofluorescence

Image 1. Immunofluorescence analysis of mouse liver using RBP4 Rabbit mAb (ABIN7269951) at dilution of 1:100 (40x lens). Blue: DAPI for nuclear staining.



Western Blotting

Image 2. Western blot analysis of extracts of HepG2 cells, using RBP4 antibody (ABIN7269951) at 1:1000 dilution. Secondary antibody: HRP Goat Anti-Rabbit IgG (H+L) (ABIN1684268 and ABIN3020597) at 1:10000 dilution. Lysates/proteins: 25 µg per lane. Blocking buffer: 3 % nonfat dry milk in TBST. Detection: ECL Enhanced Kit (RM00021). Exposure time: 180s.



Immunofluorescence

Image 3. Immunofluorescence analysis of rat liver using RBP4 Rabbit mAb (ABIN7269951) at dilution of 1:100 (40x lens). Blue: DAPI for nuclear staining.

Please check the [product details page](#) for more images. Overall 4 images are available for ABIN7269951.