

Datasheet for ABIN7269954 anti-RECK antibody (AA 110-210)



[Go to Product page](#)

1 Image

Overview

Quantity:	100 µL
Target:	RECK
Binding Specificity:	AA 110-210
Reactivity:	Human
Host:	Rabbit
Clonality:	Polyclonal
Conjugate:	This RECK antibody is un-conjugated
Application:	Western Blotting (WB)

Product Details

Purpose:	RECK Rabbit pAb
Immunogen:	Recombinant fusion protein containing a sequence corresponding to amino acids 110-210 of human RECK (NP_066934.1).
Sequence:	ALECRQACKQ ASSKNDISKV CRKEYENALF SCISRNEMGS VCCSYAGHHT NCREYCQAIF RTDSSPGPSQ IKAIVENYCAS ISPQLIHCVN NYTQSYPMRN P
Isotype:	IgG
Cross-Reactivity:	Human, Mouse, Rat
Characteristics:	Polyclonal Antibodies
Purification:	Affinity purification

Target Details

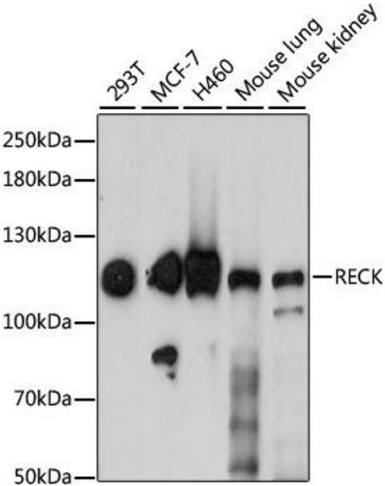
Target:	RECK
Alternative Name:	RECK (RECK Products)
Background:	The protein encoded by this gene is a cysteine-rich, extracellular protein with protease inhibitor-like domains whose expression is suppressed strongly in many tumors and cells transformed by various kinds of oncogenes. In normal cells, this membrane-anchored glycoprotein may serve as a negative regulator for matrix metalloproteinase-9, a key enzyme involved in tumor invasion and metastasis. Several transcript variants encoding different isoforms have been found for this gene.,RECK,ST15,RECK
Molecular Weight:	106kDa
Gene ID:	8434
UniProt:	O95980

Application Details

Application Notes:	WB,1:500 - 1:2000
Restrictions:	For Research Use only

Handling

Format:	Liquid
Buffer:	PBS with 0.02 % sodium azide,50 % glycerol, pH 7.3.
Preservative:	Sodium azide
Precaution of Use:	This product contains Sodium azide: a POISONOUS AND HAZARDOUS SUBSTANCE which should be handled by trained staff only.
Storage:	-20 °C
Storage Comment:	Store at -20°C. Avoid freeze / thaw cycles.



Western Blotting

Image 1. Western blot analysis of extracts of various cell lines, using RECK antibody (ABIN7269954) at 1:1000 dilution. Secondary antibody: HRP Goat Anti-Rabbit IgG (H+L) (ABIN1684268 and ABIN3020597) at 1:10000 dilution. Lysates/proteins: 25 µg per lane. Blocking buffer: 3 % nonfat dry milk in TBST. Detection: ECL Enhanced Kit (RM00021). Exposure time: 60s.