

Datasheet for ABIN7269957

anti-RGMA antibody[Go to Product page](#)**1** Image

Overview

Quantity:	100 µL
Target:	RGMA
Reactivity:	Human
Host:	Rabbit
Clonality:	Monoclonal
Conjugate:	This RGMA antibody is un-conjugated
Application:	Western Blotting (WB)

Product Details

Purpose:	RGMA Rabbit mAb
Immunogen:	A synthesized peptide derived from human RGMA.
Isotype:	IgG
Cross-Reactivity:	Mouse, Rat
Characteristics:	Monoclonal Antibodies
Purification:	Affinity purification

Target Details

Target:	RGMA
Alternative Name:	RGMA (RGMA Products)
Background:	This gene encodes a member of the repulsive guidance molecule family. The encoded protein

Target Details

is a glycosylphosphatidylinositol-anchored glycoprotein that functions as an axon guidance protein in the developing and adult central nervous system. This protein may also function as a tumor suppressor in some cancers. Alternate splicing results in multiple transcript variants.,RGMA, RGM, repulsive guidance molecule A,Neuroscience,Stem Cells,RGMA

Molecular Weight: 37kDa

Gene ID: 56963

UniProt: [Q96B86](#)

Pathways: [Tube Formation](#)

Application Details

Application Notes: WB,1:500 - 1:2000

Restrictions: For Research Use only

Handling

Format: Liquid

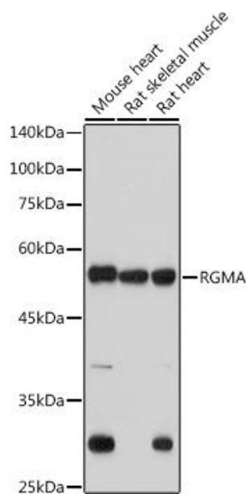
Buffer: PBS with 0.02 % sodium azide,0.05 % BSA,50 % glycerol, pH 7.3.

Preservative: Sodium azide

Precaution of Use: This product contains Sodium azide: a POISONOUS AND HAZARDOUS SUBSTANCE which should be handled by trained staff only.

Storage: -20 °C

Storage Comment: Store at -20°C. Avoid freeze / thaw cycles.



Western Blotting

Image 1. Western blot analysis of extracts of various cell lines, using RGMA antibody (ABIN7269957) at 1:1000 dilution. Secondary antibody: HRP Goat Anti-Rabbit IgG (H+L) (ABIN1684268 and ABIN3020597) at 1:10000 dilution. Lysates/proteins: 25 µg per lane. Blocking buffer: 3 % nonfat dry milk in TBST. Detection: ECL Basic Kit (RM00020). Exposure time: 180s.