



[Go to Product page](#)

Datasheet for ABIN7269968
anti-SGEF antibody (AA 592-871)

1 Image

Overview

Quantity:	100 µL
Target:	SGEF (ARHGEF26)
Binding Specificity:	AA 592-871
Reactivity:	Human
Host:	Rabbit
Clonality:	Polyclonal
Conjugate:	This SGEF antibody is un-conjugated
Application:	Western Blotting (WB), Immunohistochemistry (IHC), Immunofluorescence (IF)

Product Details

Purpose:	ARHGEF26 Rabbit pAb
Immunogen:	Recombinant fusion protein containing a sequence corresponding to amino acids 592-871 of human ARHGEF26 (NP_056410.3).
Sequence:	ICQKTPKDSP KYEVCKRALK EVSKLVRLCN EGARKMERTE MMYTINSQLE FKIKPFPLVS SSRWLVKRG E LTAYVEDTVL FSRRTSKQQV YFFLFNDVLI ITKKKSEESY NVNDYSLRDQ LLVESCDNEE LNSSPGKNSS TMLYSRQSSA SHLFTLVLS NHANEKV EML LGAETQSERA RWITALGHSS GKPPADRTSL TQVEIVRSFT AKQPDELSLQ VADVLLIYQR VSDGWYEGER LRDGERGWFP MECAKEITCQ ATIDKNVERM GRLLGLETNV
Isotype:	IgG
Cross-Reactivity:	Human, Mouse, Rat
Characteristics:	Polyclonal Antibodies

Product Details

Purification: Affinity purification

Target Details

Target: SGEF (ARHGEF26)

Alternative Name: ARHGEF26 ([ARHGEF26 Products](#))

Background: This gene encodes a member of the Rho-guanine nucleotide exchange factor (Rho-GEF) family. These proteins regulate Rho GTPases by catalyzing the exchange of GDP for GTP. The encoded protein specifically activates RhoG and plays a role in the promotion of macropinocytosis. Underexpression of the encoded protein may be a predictive marker of chemoresistant disease. Alternatively spliced transcript variants encoding multiple isoforms have been observed for this gene. [provided by RefSeq, Oct 2011],ARHGEF26,CSGEF,HMFN1864,SGEF,Signal Transduction,G protein signaling,G-Protein-Coupled Receptors(GPCR),Signal Transduction,ARHGEF26

Molecular Weight: 48kDa/88kDa/97kDa

Gene ID: 26084

UniProt: [Q96DR7](#)

Application Details

Application Notes: WB,1:500 - 1:2000,IHC,1:50 - 1:100,IF,1:50 - 1:100

Restrictions: For Research Use only

Handling

Format: Liquid

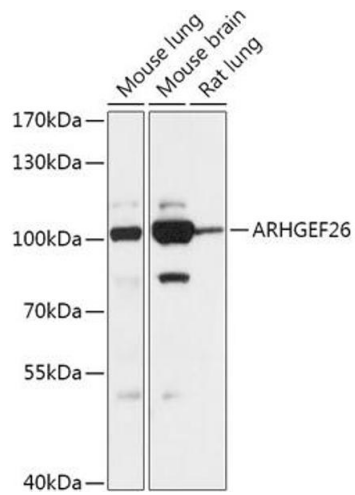
Buffer: PBS with 0.02 % sodium azide,50 % glycerol, pH 7.3.

Preservative: Sodium azide

Precaution of Use: This product contains Sodium azide: a POISONOUS AND HAZARDOUS SUBSTANCE which should be handled by trained staff only.

Storage: -20 °C

Storage Comment: Store at -20°C. Avoid freeze / thaw cycles.



Western Blotting

Image 1. Western blot analysis of extracts of various cell lines, using antibody (ABIN7269968) at 1:1000 dilution. Secondary antibody: HRP Goat Anti-Rabbit IgG (H+L) (ABIN1684268 and ABIN3020597) at 1:10000 dilution. Lysates/proteins: 25 µg per lane. Blocking buffer: 3 % nonfat dry milk in TBST. Detection: ECL Basic Kit (RM00020). Exposure time: 10s.