



[Go to Product page](#)

Datasheet for ABIN7269973
anti-RHOBTB2 antibody

1 Image

Overview

Quantity:	100 µL
Target:	RHOBTB2
Reactivity:	Human
Host:	Rabbit
Clonality:	Polyclonal
Conjugate:	This RHOBTB2 antibody is un-conjugated
Application:	Western Blotting (WB), Immunofluorescence (IF)

Product Details

Purpose:	RHOBTB2 Rabbit pAb
Immunogen:	Recombinant protein of human RHOBTB2.
Isotype:	IgG
Cross-Reactivity:	Human, Mouse, Rat
Characteristics:	Polyclonal Antibodies
Purification:	Affinity purification

Target Details

Target:	RHOBTB2
Alternative Name:	RHOBTB2 (RHOBTB2 Products)
Background:	The protein encoded by this gene is a small Rho GTPase and a candidate tumor suppressor.

Target Details

The encoded protein interacts with the cullin-3 protein, a ubiquitin E3 ligase necessary for mitotic cell division. This protein inhibits the growth and spread of some types of breast cancer. Three transcript variants encoding different isoforms have been found for this gene. [provided by RefSeq, Nov 2011],DBC2,RHOBTB2,Cancer,Cell Biology & Developmental Biology,Cell Cycle,Cell Cycle_Cell cycle inhibitors,Epigenetics & Nuclear Signaling,Signal Transduction,Ubiquitin,Ubiquitin_Ubiquitin-Proteasome Signaling Pathway,RHOBTB2

Gene ID: 23221

UniProt: [Q9BYZ6](#)

Application Details

Application Notes: WB,1:500 - 1:2000,IF,1:50 - 1:200

Restrictions: For Research Use only

Handling

Format: Liquid

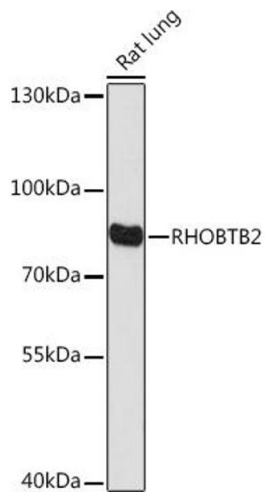
Buffer: PBS with 0.02 % sodium azide,50 % glycerol, pH 7.3.

Preservative: Sodium azide

Precaution of Use: This product contains Sodium azide: a POISONOUS AND HAZARDOUS SUBSTANCE which should be handled by trained staff only.

Storage: -20 °C

Storage Comment: Store at -20°C. Avoid freeze / thaw cycles.



Western Blotting

Image 1. Western blot analysis of extracts of Rat lung, using RHOBTB2 Rabbit pAb (ABIN7269973) at 1:1000 dilution. Secondary antibody: HRP Goat Anti-Rabbit IgG (H+L) (ABIN1684268 and ABIN3020597) at 1:10000 dilution. Lysates/proteins: 25 µg per lane. Blocking buffer: 3 % nonfat dry milk in TBST. Detection: ECL Basic Kit (RM00020). Exposure time: 180s.