



[Go to Product page](#)

Datasheet for ABIN7269974

anti-Rho-related GTP-binding protein antibody

2 Images

Overview

Quantity:	100 µL
Target:	Rho-related GTP-binding protein (RhO (pan))
Reactivity:	Human
Host:	Rabbit
Clonality:	Monoclonal
Conjugate:	This Rho-related GTP-binding protein antibody is un-conjugated
Application:	Western Blotting (WB), Immunohistochemistry (IHC)

Product Details

Purpose:	Rhodopsin Rabbit mAb
Immunogen:	A synthesized peptide derived from human Rhodopsin
Isotype:	IgG
Cross-Reactivity:	Mouse, Rat
Characteristics:	Monoclonal Antibodies
Purification:	Affinity purification

Target Details

Target:	Rho-related GTP-binding protein (RhO (pan))
Alternative Name:	RHO (RhO (pan) Products)
Background:	Retinitis pigmentosa is an inherited progressive disease which is a major cause of blindness in

Target Details

western communities. It can be inherited as an autosomal dominant, autosomal recessive, or X-linked recessive disorder. In the autosomal dominant form, which comprises about 25 % of total cases, approximately 30 % of families have mutations in the gene encoding the rod photoreceptor-specific protein rhodopsin. This is the transmembrane protein which, when photoexcited, initiates the visual transduction cascade. Defects in this gene are also one of the causes of congenital stationary night blindness. [provided by RefSeq, Jul 2008], CSNBAD1, OPN2, RP4, G protein signaling, G protein signaling_G-Protein-Coupled Receptors(GPCR), Neuroscience, Signal Transduction, RHO

Molecular Weight: 39kDa

Gene ID: 6010

UniProt: [P08100](#)

Application Details

Application Notes: WB, 1:500 - 1:2000, IHC, 1:50 - 1:200

Restrictions: For Research Use only

Handling

Format: Liquid

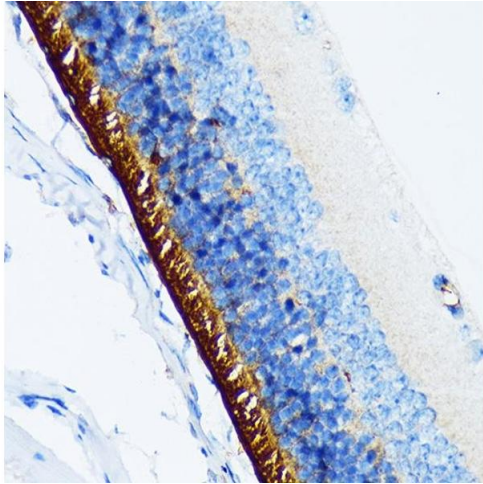
Buffer: PBS with 0.02 % sodium azide, 0.05 % BSA, 50 % glycerol, pH 7.3.

Preservative: Sodium azide

Precaution of Use: This product contains Sodium azide: a POISONOUS AND HAZARDOUS SUBSTANCE which should be handled by trained staff only.

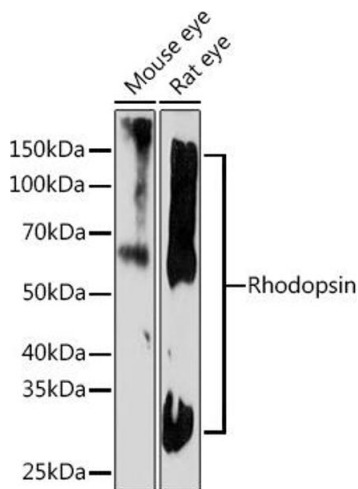
Storage: -20 °C

Storage Comment: Store at -20°C. Avoid freeze / thaw cycles.



Immunohistochemistry

Image 1. Immunohistochemistry of paraffin-embedded mouse retina using Rhodopsin Rabbit mAb (ABIN7269974) at dilution of 1:100 (40x lens). Perform microwave antigen retrieval with 10 mM Tris/EDTA buffer pH 9.0 before commencing with IHC staining protocol.



Western Blotting

Image 2. Western blot analysis of extracts of various cell lines, using Rhodopsin Rabbit mAb (ABIN7269974) at 1:1000 dilution. Secondary antibody: HRP Goat Anti-Rabbit IgG (H+L) (ABIN1684268 and ABIN3020597) at 1:10000 dilution. Lysates/proteins: 25 µg per lane. Blocking buffer: 3 % nonfat dry milk in TBST. Detection: ECL Basic Kit (RM00020). Exposure time: 3 min.