



[Go to Product page](#)

Datasheet for ABIN7269987  
**anti-RNASE6 antibody (AA 1-150)**

4 Images

Overview

Quantity:	100 µL
Target:	RNASE6
Binding Specificity:	AA 1-150
Reactivity:	Human
Host:	Rabbit
Clonality:	Polyclonal
Conjugate:	This RNASE6 antibody is un-conjugated
Application:	Western Blotting (WB), Immunohistochemistry (IHC), Immunofluorescence (IF)

Product Details

Purpose:	RNASE6 Rabbit pAb
Immunogen:	Recombinant fusion protein containing a sequence corresponding to amino acids 1-150 of human RNASE6 (NP_005606.1).
Sequence:	MVLCFPLLLL LLVLWGPVCP LHAWPKRLTK AHWFEIQHIQ PSPLQCNRAM SGINNYTQHC KHQNTFLHDS FQNVAAVCDL LSIVCKNRRH NCHQSSKPVN MTDCLRTSGK YPQCRYSA QYKFFIVACD PPQKSDPPYK LVPVHLSIL
Isotype:	IgG
Cross-Reactivity:	Human, Mouse, Rat
Characteristics:	Polyclonal Antibodies
Purification:	Affinity purification

## Target Details

---

Target:	RNASE6
Alternative Name:	RNASE6 ( <a href="#">RNASE6 Products</a> )
Background:	The protein encoded by this gene is a member of the ribonuclease A superfamily and functions in the urinary tract. The protein has broad-spectrum antimicrobial activity against pathogenic bacteria.,RNASE6,RAD1,RNS6,RNasek6,Epigenetics & Nuclear Signaling,RNASE6
Molecular Weight:	17kDa
Gene ID:	6039
UniProt:	<a href="#">Q93091</a>

## Application Details

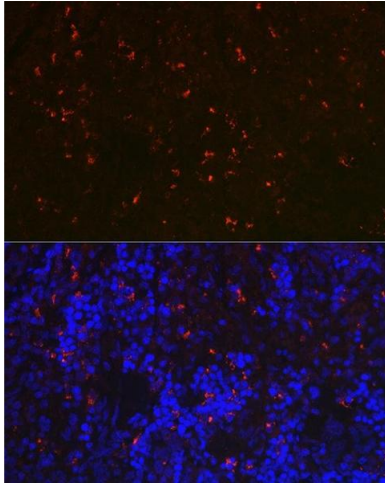
---

Application Notes:	WB,1:200 - 1:2000,IHC,1:50 - 1:200,IF,1:50 - 1:200
Restrictions:	For Research Use only

## Handling

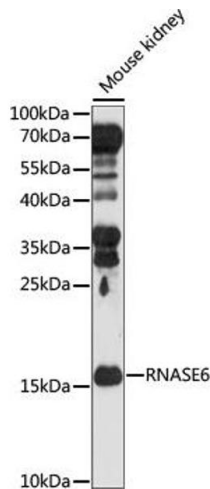
---

Format:	Liquid
Buffer:	PBS with 0.02 % sodium azide,50 % glycerol, pH 7.3.
Preservative:	Sodium azide
Precaution of Use:	This product contains Sodium azide: a POISONOUS AND HAZARDOUS SUBSTANCE which should be handled by trained staff only.
Storage:	-20 °C
Storage Comment:	Store at -20°C. Avoid freeze / thaw cycles.



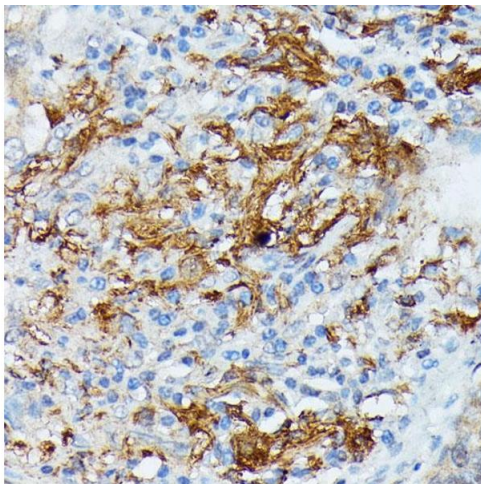
### Immunofluorescence

**Image 1.** Immunofluorescence analysis of rat spleen using RN Rabbit pAb (ABIN7269987) at dilution of 1:100 (40x lens). Blue: DAPI for nuclear staining.



### Western Blotting

**Image 2.** Western blot analysis of extracts of Mouse kidney, using RN antibody (ABIN7269987) at 1:1000 dilution. Secondary antibody: HRP Goat Anti-Rabbit IgG (H+L) (ABIN1684268 and ABIN3020597) at 1:10000 dilution. Lysates/proteins: 25 µg per lane. Blocking buffer: 3 % nonfat dry milk in TBST. Detection: ECL Basic Kit (RM00020). Exposure time: 90s.



### Immunohistochemistry

**Image 3.** Immunohistochemistry of paraffin-embedded human lung cancer using RN antibody (ABIN7269987) at dilution of 1:100 (40x lens). Perform microwave antigen retrieval with 10 mM PBS buffer pH 7.2 before commencing with IHC staining protocol.

Please check the [product details page](#) for more images. Overall 4 images are available for ABIN7269987.