



Datasheet for ABIN7269989
anti-RRM2 antibody



[Go to Product page](#)

1 Image

Overview

Quantity:	100 µL
Target:	RRM2
Reactivity:	Human
Host:	Rabbit
Clonality:	Monoclonal
Conjugate:	This RRM2 antibody is un-conjugated
Application:	Western Blotting (WB)

Product Details

Purpose:	RRM2 Rabbit mAb
Immunogen:	A synthesized peptide derived from human RRM2
Isotype:	IgG
Cross-Reactivity:	Human, Mouse, Rat
Characteristics:	Monoclonal Antibodies
Purification:	Affinity purification

Target Details

Target:	RRM2
Alternative Name:	RRM2 (RRM2 Products)
Background:	This gene encodes one of two non-identical subunits for ribonucleotide reductase. This

Target Details

reductase catalyzes the formation of deoxyribonucleotides from ribonucleotides. Synthesis of the encoded protein (M2) is regulated in a cell-cycle dependent fashion. Transcription from this gene can initiate from alternative promoters, which results in two isoforms that differ in the lengths of their N-termini. Related pseudogenes have been identified on chromosomes 1 and X. [provided by RefSeq, Sep 2009],R2, RR2, RR2M,Epigenetics & Nuclear Signaling,RRM2

Molecular Weight: 45kDa

Gene ID: 6241

UniProt: [P31350](#)

Pathways: [Mitotic G1-G1/S Phases](#)

Application Details

Application Notes: WB,1:500 - 1:2000

Restrictions: For Research Use only

Handling

Format: Liquid

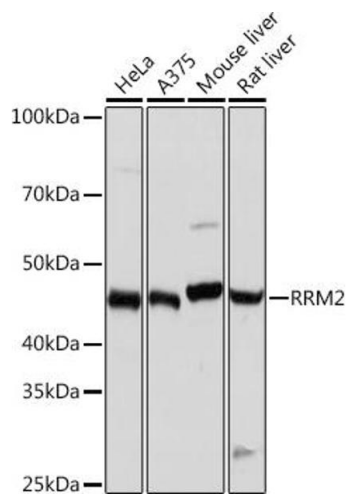
Buffer: PBS with 0.02 % sodium azide,0.05 % BSA,50 % glycerol, pH 7.3.

Preservative: Sodium azide

Precaution of Use: This product contains Sodium azide: a POISONOUS AND HAZARDOUS SUBSTANCE which should be handled by trained staff only.

Storage: -20 °C

Storage Comment: Store at -20°C. Avoid freeze / thaw cycles.



Western Blotting

Image 1. Western blot analysis of extracts of various cell lines, using RRM2 Rabbit mAb (ABIN7269989) at 1:1000 dilution. Secondary antibody: HRP Goat Anti-Rabbit IgG (H+L) (ABIN1684268 and ABIN3020597) at 1:10000 dilution. Lysates/proteins: 25 µg per lane. Blocking buffer: 3 % nonfat dry milk in TBST. Detection: ECL Basic Kit (RM00020). Exposure time: 1s.