

Datasheet for ABIN7270001
anti-RPL28 antibody (AA 1-100)[Go to Product page](#)

2 Images

Overview

Quantity:	100 µL
Target:	RPL28
Binding Specificity:	AA 1-100
Reactivity:	Human
Host:	Rabbit
Clonality:	Polyclonal
Conjugate:	This RPL28 antibody is un-conjugated
Application:	Western Blotting (WB), Immunofluorescence (IF)

Product Details

Purpose:	RPL28 Rabbit pAb
Immunogen:	A synthetic peptide corresponding to a sequence within amino acids 1-100 of human RPL28 (NP_000982.2).
Sequence:	MSAHLQWMVV RNCSSFLIKR NKQTYSTEPN NLKARNSFRY NGLIHRKTVG VEPAADGKGV VWVIKRRSGQ RKPATSYVRT TINKNARATL SSIRHMIRKN
Isotype:	IgG
Cross-Reactivity:	Human, Mouse, Rat
Characteristics:	Polyclonal Antibodies
Purification:	Affinity purification

Target Details

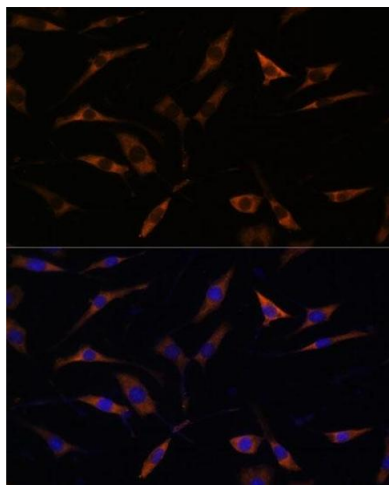
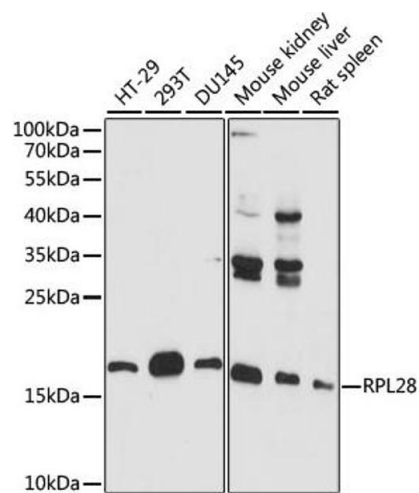
Target:	RPL28
Alternative Name:	RPL28 (RPL28 Products)
Background:	<p>Ribosomes, the organelles that catalyze protein synthesis, consist of a small 40S subunit and a large 60S subunit. Together these subunits are composed of 4 RNA species and approximately 80 structurally distinct proteins. This gene encodes a ribosomal protein that is a component of the 60S subunit. The protein belongs to the L28E family of ribosomal proteins. It is located in the cytoplasm. Variable expression of this gene in colorectal cancers compared to adjacent normal tissues has been observed, although no correlation between the level of expression and the severity of the disease has been found. As is typical for genes encoding ribosomal proteins, there are multiple processed pseudogenes of this gene dispersed through the genome.</p> <p>Alternative splicing results in multiple transcript variants encoding distinct isoforms.,RPL28,L28,Epigenetics & Nuclear Signaling,RNA Binding,RPL28</p>
Molecular Weight:	7kDa/10kDa/15kDa/18kDa/19kDa
Gene ID:	6158
UniProt:	P46779

Application Details

Application Notes:	WB,1:500 - 1:2000,IF,1:50 - 1:200
Restrictions:	For Research Use only

Handling

Format:	Liquid
Buffer:	PBS with 0.02 % sodium azide,50 % glycerol, pH 7.3.
Preservative:	Sodium azide
Precaution of Use:	This product contains Sodium azide: a POISONOUS AND HAZARDOUS SUBSTANCE which should be handled by trained staff only.
Storage:	-20 °C
Storage Comment:	Store at -20°C. Avoid freeze / thaw cycles.



Western Blotting

Image 1. Western blot analysis of extracts of various cell lines, using RPL28 antibody (ABIN7270001) at 1:1000 dilution. Secondary antibody: HRP Goat Anti-Rabbit IgG (H+L) (ABIN1684268 and ABIN3020597) at 1:10000 dilution. Lysates/proteins: 25 µg per lane. Blocking buffer: 3 % nonfat dry milk in TBST. Detection: ECL Basic Kit (RM00020). Exposure time: 60s.

Immunofluorescence

Image 2. Immunofluorescence analysis of L929 cells using RPL28 antibody (ABIN7270001) at dilution of 1:100. Blue: DAPI for nuclear staining.