

Datasheet for ABIN7270005  
**anti-RPL35A antibody (AA 10-90)**[Go to Product page](#)

## 1 Image

## Overview

Quantity:	100 µL
Target:	RPL35A
Binding Specificity:	AA 10-90
Reactivity:	Human
Host:	Rabbit
Clonality:	Polyclonal
Conjugate:	This RPL35A antibody is un-conjugated
Application:	Western Blotting (WB)

## Product Details

Purpose:	RPL35A Rabbit pAb
Immunogen:	Recombinant fusion protein containing a sequence corresponding to amino acids 10-90 of human RPL35A (NP_000987.2).
Sequence:	IFAGYKRGLR NQREHTALLK IEGVYARDET EFYLGKRCAY VYKAKNNTVT PGGKPNKTRV IWGKVTRAHG NSGMVRAKFR S
Isotype:	IgG
Cross-Reactivity:	Mouse, Rat
Characteristics:	Polyclonal Antibodies
Purification:	Affinity purification

## Target Details

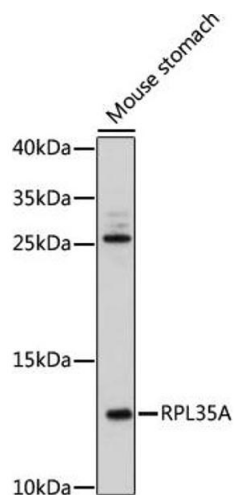
Target:	RPL35A
Alternative Name:	RPL35A ( <a href="#">RPL35A Products</a> )
Background:	<p>Ribosomes, the organelles that catalyze protein synthesis, consist of a small 40S subunit and a large 60S subunit. Together these subunits are composed of 4 RNA species and approximately 80 structurally distinct proteins. This gene encodes a ribosomal protein that is a component of the 60S subunit. The protein belongs to the L35AE family of ribosomal proteins. It is located in the cytoplasm. The rat protein has been shown to bind to both initiator and elongator tRNAs, and thus, it is located at the P site, or P and A sites, of the ribosome. Although this gene was originally mapped to chromosome 18, it has been established that it is located at 3q29-qter. Alternative splicing results in multiple transcript variants. As is typical for genes encoding ribosomal proteins, there are multiple processed pseudogenes of this gene dispersed through the genome. [provided by RefSeq, Oct 2015],DBA5,L35A,RPL35A,Epigenetics &amp; Nuclear Signaling,RNA Binding,RPL35A</p>
Molecular Weight:	12kDa
Gene ID:	6165
UniProt:	<a href="#">P18077</a>

## Application Details

Application Notes:	WB,1:500 - 1:2000
Restrictions:	For Research Use only

## Handling

Format:	Liquid
Buffer:	PBS with 0.02 % sodium azide,50 % glycerol, pH 7.3.
Preservative:	Sodium azide
Precaution of Use:	This product contains Sodium azide: a POISONOUS AND HAZARDOUS SUBSTANCE which should be handled by trained staff only.
Storage:	-20 °C
Storage Comment:	Store at -20°C. Avoid freeze / thaw cycles.



### Western Blotting

**Image 1.** Western blot analysis of extracts of mouse stomach, using RPL35A antibody (ABIN7270005) at 1:500 dilution. Secondary antibody: HRP Goat Anti-Rabbit IgG (H+L) (ABIN1684268 and ABIN3020597) at 1:10000 dilution. Lysates/proteins: 25 µg per lane. Blocking buffer: 3 % nonfat dry milk in TBST. Detection: ECL Enhanced Kit (RM00021). Exposure time: 3 min.