



[Go to Product page](#)

Datasheet for ABIN7270006
anti-RPL36A antibody (AA 37-142)

1 Image

Overview

Quantity:	100 µL
Target:	RPL36A
Binding Specificity:	AA 37-142
Reactivity:	Human
Host:	Rabbit
Clonality:	Polyclonal
Conjugate:	This RPL36A antibody is un-conjugated
Application:	Western Blotting (WB)

Product Details

Purpose:	RPL36A Rabbit pAb
Immunogen:	Recombinant fusion protein containing a sequence corresponding to amino acids 37-142 of human RPL36A (NP_066357.2).
Sequence:	MVNVPKTRRT FCKKCGKHQP HKVTQYKKGK DSLYAQGRKRR YDRKQSGYGG QTKPIFRKKA KTTKKIVLRL ECVEPNCRSK RMLAIKRCKH FELGGDKKRK GQVIQF
Isotype:	IgG
Cross-Reactivity:	Human
Characteristics:	Polyclonal Antibodies
Purification:	Affinity purification

Target Details

Target: RPL36A

Alternative Name: RPL36A ([RPL36A Products](#))

Background: Cytoplasmic ribosomes, organelles that catalyze protein synthesis, consist of a small 40S subunit and a large 60S subunit. Together these subunits are composed of 4 RNA species and approximately 80 structurally distinct proteins. This gene encodes a ribosomal protein that is a component of the 60S subunit. The protein, which shares sequence similarity with yeast ribosomal protein L44, belongs to the L44E (L36AE) family of ribosomal proteins. Although this gene has been referred to as ribosomal protein L44 (RPL44), its official name is ribosomal protein L36a (RPL36A). This gene and the human gene officially named ribosomal protein L36a-like (RPL36AL) encode nearly identical proteins, however, they are distinct genes. As is typical for genes encoding ribosomal proteins, there are multiple processed pseudogenes of this gene dispersed through the genome. Naturally occurring read-through transcription occurs between this locus and the heterogeneous nuclear ribonucleoprotein H2 (H') gene.,RPL36A,L36A,L44L,MIG6,RPL44,Epigenetics & Nuclear Signaling,RPL36A

Molecular Weight: 12kDa

Gene ID: 6173

UniProt: [P83881](#)

Application Details

Application Notes: WB,1:500 - 1:2000

Restrictions: For Research Use only

Handling

Format: Liquid

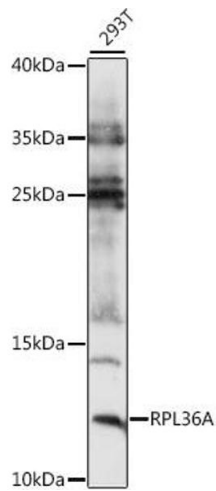
Buffer: PBS with 0.02 % sodium azide,50 % glycerol, pH 7.3.

Preservative: Sodium azide

Precaution of Use: This product contains Sodium azide: a POISONOUS AND HAZARDOUS SUBSTANCE which should be handled by trained staff only.

Storage: -20 °C

Storage Comment: Store at -20°C. Avoid freeze / thaw cycles.



Western Blotting

Image 1. Western blot analysis of extracts of 293T cells, using RPL36A antibody (ABIN7270006) at 1:1000 dilution. Secondary antibody: HRP Goat Anti-Rabbit IgG (H+L) (ABIN1684268 and ABIN3020597) at 1:10000 dilution. Lysates/proteins: 25 µg per lane. Blocking buffer: 3 % nonfat dry milk in TBST. Detection: ECL Basic Kit (RM00020). Exposure time: 1s.