

Datasheet for ABIN7270007
anti-RPL36AL antibody (AA 1-106)

5 Images

[Go to Product page](#)

Overview

Quantity:	100 µL
Target:	RPL36AL
Binding Specificity:	AA 1-106
Reactivity:	Human
Host:	Rabbit
Clonality:	Polyclonal
Conjugate:	This RPL36AL antibody is un-conjugated
Application:	Western Blotting (WB), Immunofluorescence (IF)

Product Details

Purpose:	RPL36AL Rabbit pAb
Immunogen:	Recombinant fusion protein containing a sequence corresponding to amino acids 1-106 of human RPL36AL (NP_000992.1).
Sequence:	MVNPVKTRRT FCKKCGKHQP HKVTQYKKGK DSLYAQGRRR YDRKQSGYGG QTKPIFRKKA KTTKKIVLRL ECVEPNCRSK RMLAIKRCKH FELGGDKKRK GQVIQF
Isotype:	IgG
Cross-Reactivity:	Human, Mouse, Rat
Characteristics:	Polyclonal Antibodies
Purification:	Affinity purification

Target Details

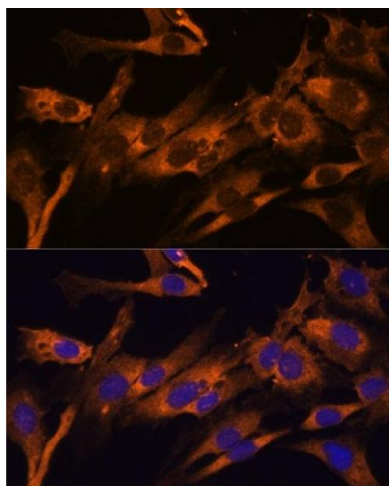
Target:	RPL36AL
Alternative Name:	RPL36AL (RPL36AL Products)
Background:	Cytoplasmic ribosomes, organelles that catalyze protein synthesis, consist of a small 40S subunit and a large 60S subunit. Together these subunits are composed of 4 RNA species and approximately 80 structurally distinct proteins. This gene encodes a ribosomal protein that is a component of the 60S subunit. The protein, which shares sequence similarity with yeast ribosomal protein L44, belongs to the L44E (L36AE) family of ribosomal proteins. This gene and the human gene officially named ribosomal protein L36a (RPL36A) encode nearly identical proteins, however, they are distinct genes. Although the name of this gene has been referred to as ribosomal protein L36a (RPL36A), its official name is ribosomal protein L36a-like (RPL36AL). As is typical for genes encoding ribosomal proteins, there are multiple processed pseudogenes of this gene dispersed through the genome.,RPL36AL,RPL36A,Epigenetics & Nuclear Signaling,RPL36AL
Molecular Weight:	12kDa
Gene ID:	6166
UniProt:	Q969Q0

Application Details

Application Notes:	WB,1:500 - 1:2000,IF,1:50 - 1:100
Restrictions:	For Research Use only

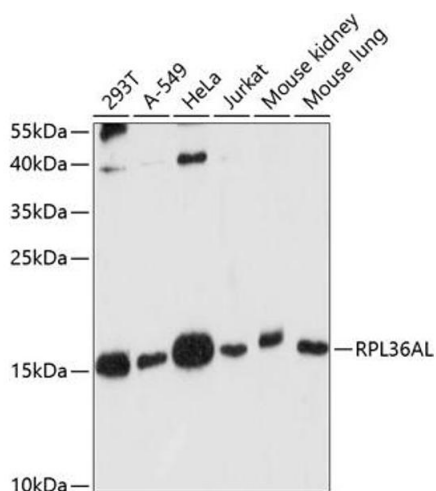
Handling

Format:	Liquid
Buffer:	PBS with 0.02 % sodium azide,50 % glycerol, pH 7.3.
Preservative:	Sodium azide
Precaution of Use:	This product contains Sodium azide: a POISONOUS AND HAZARDOUS SUBSTANCE which should be handled by trained staff only.
Storage:	-20 °C
Storage Comment:	Store at -20°C. Avoid freeze / thaw cycles.



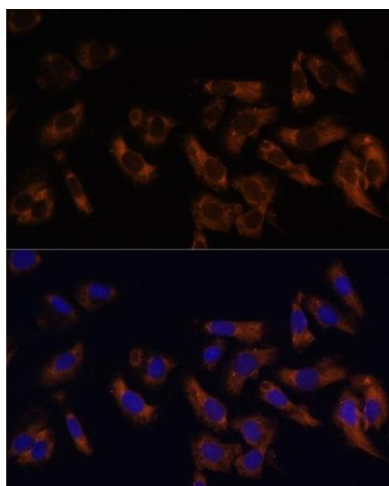
Immunofluorescence

Image 1. Immunofluorescence analysis of C6 cells using RPL36AL Polyclonal Antibody (ABIN7270007) at dilution of 1:100 (40x lens). Blue: DAPI for nuclear staining.



Western Blotting

Image 2. Western blot analysis of extracts of various cell lines, using RPL36AL antibody (ABIN7270007) at 1:1000 dilution. Secondary antibody: HRP Goat Anti-Rabbit IgG (H+L) (ABIN1684268 and ABIN3020597) at 1:10000 dilution. Lysates/proteins: 25 µg per lane. Blocking buffer: 3 % nonfat dry milk in TBST. Detection: ECL Basic Kit (RM00020). Exposure time: 90s.



Immunofluorescence

Image 3. Immunofluorescence analysis of U-2 OS cells using RPL36AL Polyclonal Antibody (ABIN7270007) at dilution of 1:100 (40x lens). Blue: DAPI for nuclear staining.

Please check the [product details page](#) for more images. Overall 5 images are available for ABIN7270007.