



Datasheet for ABIN7270008 **anti-RPL37 antibody (AA 1-97)**



[Go to Product page](#)

1 Image

Overview

Quantity:	100 µL
Target:	RPL37
Binding Specificity:	AA 1-97
Reactivity:	Human
Host:	Rabbit
Clonality:	Polyclonal
Conjugate:	This RPL37 antibody is un-conjugated
Application:	Western Blotting (WB)

Product Details

Purpose:	RPL37 Rabbit pAb
Immunogen:	A synthetic peptide corresponding to a sequence within amino acids 1-97 of human RPL37 (NP_000988.1).
Sequence:	MTKGTSSFGK RRNKTHTLCR RCGSKAYHLQ KSTCGKCGYP AKRKRKYNWS AKAKRRNTTG TGRMRHLKIV YRRFRHGFRE GTTPKPKRAA VAASSSS
Isotype:	IgG
Cross-Reactivity:	Human, Mouse, Rat
Characteristics:	Polyclonal Antibodies
Purification:	Affinity purification

Target Details

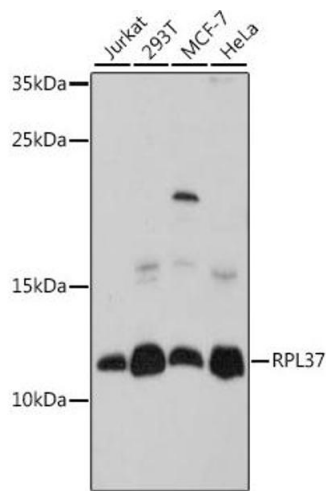
Target:	RPL37
Alternative Name:	RPL37 (RPL37 Products)
Background:	Ribosomes, the organelles that catalyze protein synthesis, consist of a small 40S subunit and a large 60S subunit. Together these subunits are composed of 4 RNA species and approximately 80 structurally distinct proteins. This gene encodes a ribosomal protein that is a component of the 60S subunit. The protein belongs to the L37E family of ribosomal proteins. It is located in the cytoplasm. The protein contains a C2C2-type zinc finger-like motif. As is typical for genes encoding ribosomal proteins, there are multiple processed pseudogenes of this gene dispersed through the genome.,RPL37,L37,RPL37
Molecular Weight:	11kDa
Gene ID:	6167
UniProt:	P61927

Application Details

Application Notes:	WB,1:500 - 1:2000
Restrictions:	For Research Use only

Handling

Format:	Liquid
Buffer:	PBS with 0.02 % sodium azide,50 % glycerol, pH 7.3.
Preservative:	Sodium azide
Precaution of Use:	This product contains Sodium azide: a POISONOUS AND HAZARDOUS SUBSTANCE which should be handled by trained staff only.
Storage:	-20 °C
Storage Comment:	Store at -20°C. Avoid freeze / thaw cycles.



Western Blotting

Image 1. Western blot analysis of extracts of various cell lines, using RPL37 antibody (ABIN7270008) at 1:1000 dilution. Secondary antibody: HRP Goat Anti-Rabbit IgG (H+L) (ABIN1684268 and ABIN3020597) at 1:10000 dilution. Lysates/proteins: 25 µg per lane. Blocking buffer: 3 % nonfat dry milk in TBST. Detection: ECL Basic Kit (RM00020). Exposure time: 90s.