

Datasheet for ABIN7270011

anti-RPL7A antibody[Go to Product page](#)**1** Image

Overview

Quantity:	100 µL
Target:	RPL7A
Reactivity:	Human
Host:	Rabbit
Clonality:	Monoclonal
Conjugate:	This RPL7A antibody is un-conjugated
Application:	Western Blotting (WB)

Product Details

Purpose:	RPL7A Rabbit mAb
Immunogen:	Recombinant protein of human RPL7A.
Isotype:	IgG
Cross-Reactivity:	Human, Mouse, Rat
Characteristics:	Monoclonal Antibodies
Purification:	Affinity purification

Target Details

Target:	RPL7A
Alternative Name:	RPL7A (RPL7A Products)
Background:	Cytoplasmic ribosomes, organelles that catalyze protein synthesis, consist of a small 40S

Target Details

subunit and a large 60S subunit. Together these subunits are composed of 4 RNA species and approximately 80 structurally distinct proteins. This gene encodes a ribosomal protein that is a component of the 60S subunit. The protein belongs to the L7AE family of ribosomal proteins. It can interact with a subclass of nuclear hormone receptors, including thyroid hormone receptor, and inhibit their ability to transactivate by preventing their binding to their DNA response elements. This gene is included in the surfeit gene cluster, a group of very tightly linked genes that do not share sequence similarity. It is co-transcribed with the U24, U36a, U36b, and U36c small nucleolar RNA genes, which are located in its second, fifth, fourth, and sixth introns, respectively. This gene rearranges with the trk proto-oncogene to form the chimeric oncogene trk-2h, which encodes an oncoprotein consisting of the N terminus of ribosomal protein L7a fused to the receptor tyrosine kinase domain of trk. As is typical for genes encoding ribosomal proteins, there are multiple processed pseudogenes of this gene dispersed through the genome.,RPL7A, L7A, SURF3, TRUP, ribosomal protein L7a,Epigenetics & Nuclear Signaling,RNA Binding,RPL7A

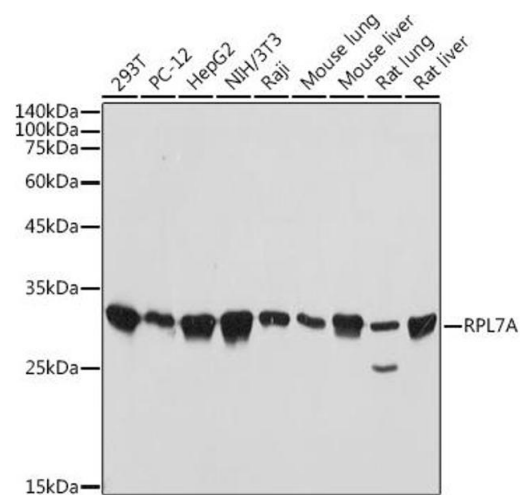
Molecular Weight:	30kDa
Gene ID:	6130
UniProt:	P62424

Application Details

Application Notes:	WB,1:500 - 1:2000
Restrictions:	For Research Use only

Handling

Format:	Liquid
Buffer:	PBS with 0.02 % sodium azide,0.05 % BSA,50 % glycerol, pH 7.3.
Preservative:	Sodium azide
Precaution of Use:	This product contains Sodium azide: a POISONOUS AND HAZARDOUS SUBSTANCE which should be handled by trained staff only.
Storage:	-20 °C
Storage Comment:	Store at -20°C. Avoid freeze / thaw cycles.



Western Blotting

Image 1. Western blot analysis of extracts of various cell lines, using RPL7A antibody (ABIN7270011) at 1:1000 dilution. Secondary antibody: HRP Goat Anti-Rabbit IgG (H+L) (ABIN1684268 and ABIN3020597) at 1:10000 dilution. Lysates/proteins: 25 µg per lane. Blocking buffer: 3 % nonfat dry milk in TBST. Detection: ECL Basic Kit (RM00020). Exposure time: 5s.