

Datasheet for ABIN7270013  
**anti-RPS14 antibody (AA 1-128)**

## 3 Images

[Go to Product page](#)

## Overview

Quantity:	100 µL
Target:	RPS14
Binding Specificity:	AA 1-128
Reactivity:	Human
Host:	Rabbit
Clonality:	Polyclonal
Conjugate:	This RPS14 antibody is un-conjugated
Application:	Western Blotting (WB), Immunofluorescence (IF)

## Product Details

Purpose:	MRPS14 Rabbit pAb
Immunogen:	Recombinant fusion protein containing a sequence corresponding to amino acids 1-128 of human MRPS14 (NP_071383.1).
Sequence:	MAAFMLGSLT RTFKQMPVSS ASGQVRSHYV DWRMWRDVKR RKMAYEYADE RLRINSLRKN TILPKILQDV ADEEIAALPR DSCPVRIRNR CVMTSRPRGV KRRWRLSRIV FRHLADHGQL SGIQRATW
Isotype:	IgG
Cross-Reactivity:	Human, Mouse
Characteristics:	Polyclonal Antibodies
Purification:	Affinity purification

## Target Details

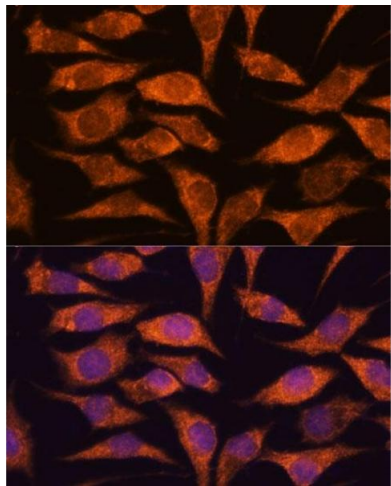
Target:	RPS14
Alternative Name:	MRPS14 ( <a href="#">RPS14 Products</a> )
Background:	<p>Mammalian mitochondrial ribosomal proteins are encoded by nuclear genes and help in protein synthesis within the mitochondrion. Mitochondrial ribosomes (mitoribosomes) consist of a small 28S subunit and a large 39S subunit. They have an estimated 75 % protein to rRNA composition compared to prokaryotic ribosomes, where this ratio is reversed. Another difference between mammalian mitoribosomes and prokaryotic ribosomes is that the latter contain a 5S rRNA. Among different species, the proteins comprising the mitoribosome differ greatly in sequence, and sometimes in biochemical properties, which prevents easy recognition by sequence homology. This gene encodes a 28S subunit protein that belongs to the ribosomal protein S14P family. Alternative splicing results in multiple transcript variants.,MRPS14,DJ262D12.2,HSMRPS14,MRP-S14,S14mt,Epigenetics &amp; Nuclear Signaling,Endocrine &amp; Metabolism,Mitochondrial metabolism,Mitochondrial markers,Mitochondrial translation,MRPS14</p>
Molecular Weight:	15kDa
Gene ID:	63931
UniProt:	<a href="#">O60783</a>
Pathways:	<a href="#">Ribonucleoprotein Complex Subunit Organization</a> , <a href="#">Ribosome Assembly</a>

## Application Details

Application Notes:	WB,1:200 - 1:2000,IF,1:50 - 1:200
Restrictions:	For Research Use only

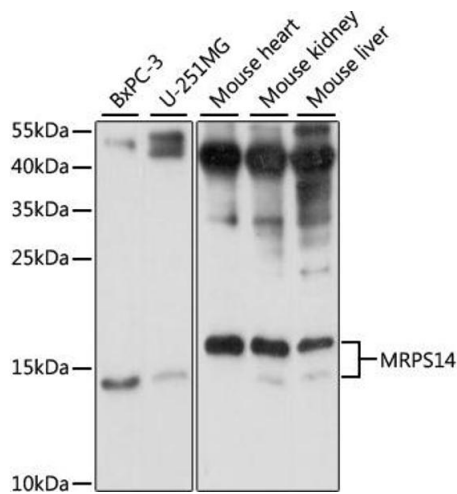
## Handling

Format:	Liquid
Buffer:	PBS with 0.02 % sodium azide,50 % glycerol, pH 7.3.
Preservative:	Sodium azide
Precaution of Use:	This product contains Sodium azide: a POISONOUS AND HAZARDOUS SUBSTANCE which should be handled by trained staff only.
Storage:	-20 °C
Storage Comment:	Store at -20°C. Avoid freeze / thaw cycles.



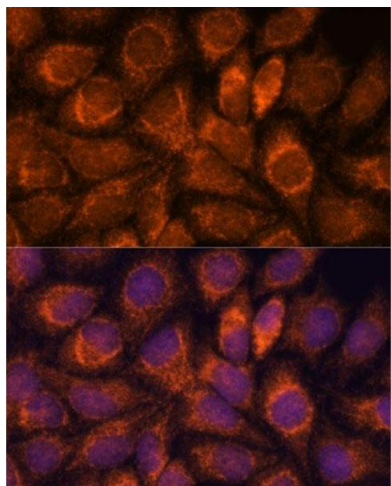
### Immunofluorescence

**Image 1.** Immunofluorescence analysis of L929 cells using MRPS14 antibody (ABIN7270013) at dilution of 1:100. Blue: DAPI for nuclear staining.



### Western Blotting

**Image 2.** Western blot analysis of extracts of various cell lines, using MRPS14 antibody (ABIN7270013) at 1:1000 dilution. Secondary antibody: HRP Goat Anti-Rabbit IgG (H+L) (ABIN1684268 and ABIN3020597) at 1:10000 dilution. Lysates/proteins: 25 µg per lane. Blocking buffer: 3 % nonfat dry milk in TBST. Detection: ECL Basic Kit (RM00020). Exposure time: 10s.



### Immunofluorescence

**Image 3.** Immunofluorescence analysis of HeLa cells using MRPS14 antibody (ABIN7270013) at dilution of 1:100. Blue: DAPI for nuclear staining.