

Datasheet for ABIN7270017

**anti-RPS20 antibody**

5 Images

[Go to Product page](#)

## Overview

Quantity:	100 µL
Target:	RPS20
Reactivity:	Human
Host:	Rabbit
Clonality:	Monoclonal
Conjugate:	This RPS20 antibody is un-conjugated
Application:	Western Blotting (WB), Immunofluorescence (IF), Immunohistochemistry (IHC)

## Product Details

Purpose:	RPS20 Rabbit mAb
Immunogen:	A synthesized peptide derived from human RPS20
Isotype:	IgG
Cross-Reactivity:	Human, Mouse, Rat
Characteristics:	Monoclonal Antibodies
Purification:	Affinity purification

## Target Details

Target:	RPS20
Alternative Name:	RPS20 ( <a href="#">RPS20 Products</a> )
Background:	Ribosomes, the organelles that catalyze protein synthesis, consist of a small 40S subunit and a

## Target Details

large 60S subunit. Together these subunits are composed of 4 RNA species and approximately 80 structurally distinct proteins. This gene encodes a ribosomal protein that is a component of the 40S subunit. The protein belongs to the S10P family of ribosomal proteins. It is located in the cytoplasm. This gene is co-transcribed with the small nucleolar RNA gene U54, which is located in its second intron. As is typical for genes encoding ribosomal proteins, there are multiple processed pseudogenes of this gene dispersed through the genome. Two transcript variants encoding different isoforms have been identified for this gene. [provided by RefSeq, Apr 2009],S20,Epigenetics & Nuclear Signaling,RNA Binding,RPS20

Molecular Weight: 13kDa

Gene ID: 6224

UniProt: [P60866](#)

## Application Details

Application Notes: WB,1:500 - 1:2000,IHC,1:50 - 1:200,IF,1:50 - 1:200

Restrictions: For Research Use only

## Handling

Format: Liquid

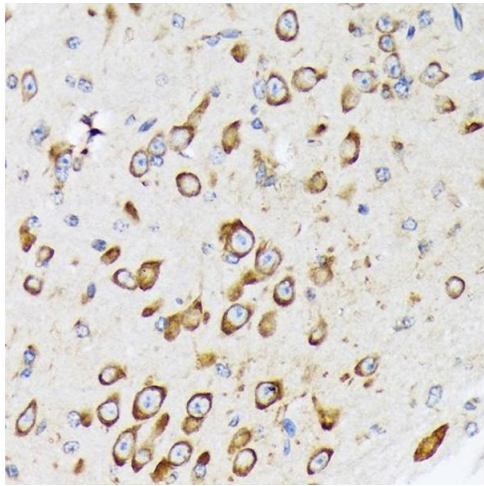
Buffer: PBS with 0.02 % sodium azide,0.05 % BSA,50 % glycerol, pH 7.3.

Preservative: Sodium azide

Precaution of Use: This product contains Sodium azide: a POISONOUS AND HAZARDOUS SUBSTANCE which should be handled by trained staff only.

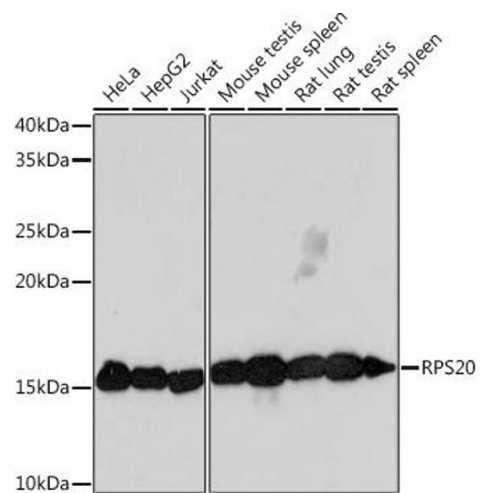
Storage: -20 °C

Storage Comment: Store at -20°C. Avoid freeze / thaw cycles.



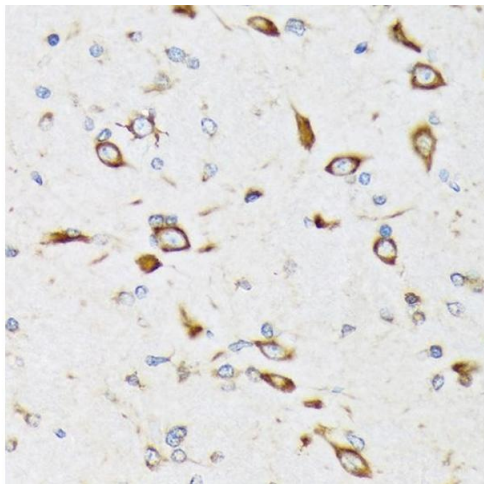
#### Immunohistochemistry

**Image 1.** Immunohistochemistry of paraffin-embedded mouse brain using RPS20 Rabbit mAb (ABIN7270017) at dilution of 1:100 (40x lens). Perform microwave antigen retrieval with 10 mM Tris/EDTA buffer pH 9.0 before commencing with IHC staining protocol.



#### Western Blotting

**Image 2.** Western blot analysis of extracts of various cell lines, using RPS20 Rabbit mAb (ABIN7270017) at 1:1000 dilution. Secondary antibody: HRP Goat Anti-Rabbit IgG (H+L) (ABIN1684268 and ABIN3020597) at 1:10000 dilution. Lysates/proteins: 25 µg per lane. Blocking buffer: 3 % nonfat dry milk in TBST. Detection: ECL Basic Kit (RM00020). Exposure time: 3 min.



#### Immunohistochemistry

**Image 3.** Immunohistochemistry of paraffin-embedded rat brain using RPS20 Rabbit mAb (ABIN7270017) at dilution of 1:100 (40x lens). Perform microwave antigen retrieval with 10 mM Tris/EDTA buffer pH 9.0 before commencing with IHC staining protocol.

Please check the [product details page](#) for more images. Overall 5 images are available for ABIN7270017.