

Datasheet for ABIN7270019  
**anti-RPS23 antibody (AA 40-120)**[Go to Product page](#)

## 1 Image

## Overview

Quantity:	100 µL
Target:	RPS23
Binding Specificity:	AA 40-120
Reactivity:	Human
Host:	Rabbit
Clonality:	Polyclonal
Conjugate:	This RPS23 antibody is un-conjugated
Application:	Western Blotting (WB)

## Product Details

Purpose:	RPS23 Rabbit pAb
Immunogen:	Recombinant fusion protein containing a sequence corresponding to amino acids 40-120 of human RPS23 (NP_001016.1).
Sequence:	PFGGASHAKG IVLEKVGVEA KQPNSAIRKC VRVQLIKNGK KITAFVPNDG CLNFIEENDE VLVAGFGRKG HAVGDIPGVR F
Isotype:	IgG
Cross-Reactivity:	Human
Characteristics:	Polyclonal Antibodies
Purification:	Affinity purification

## Target Details

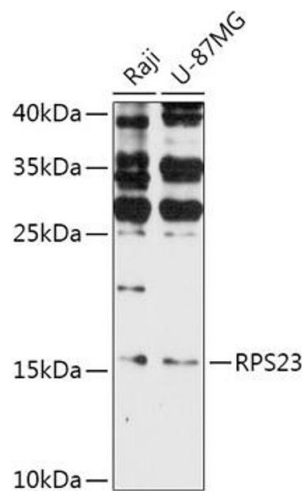
Target:	RPS23
Alternative Name:	RPS23 ( <a href="#">RPS23 Products</a> )
Background:	Ribosomes, the organelles that catalyze protein synthesis, consist of a small 40S subunit and a large 60S subunit. Together these subunits are composed of 4 RNA species and approximately 80 structurally distinct proteins. This gene encodes a ribosomal protein that is a component of the 40S subunit. The protein belongs to the S12P family of ribosomal proteins. It is located in the cytoplasm. The protein shares significant amino acid similarity with <i>S. cerevisiae</i> ribosomal protein S28. As is typical for genes encoding ribosomal proteins, there are multiple processed pseudogenes of this gene dispersed through the genome. [provided by RefSeq, Jul 2008],S23,RPS23,Epigenetics & Nuclear Signaling,RPS23
Gene ID:	6228
UniProt:	<a href="#">P62266</a>

## Application Details

Application Notes:	WB,1:500 - 1:2000
Restrictions:	For Research Use only

## Handling

Format:	Liquid
Buffer:	PBS with 0.02 % sodium azide,50 % glycerol, pH 7.3.
Preservative:	Sodium azide
Precaution of Use:	This product contains Sodium azide: a POISONOUS AND HAZARDOUS SUBSTANCE which should be handled by trained staff only.
Storage:	-20 °C
Storage Comment:	Store at -20°C. Avoid freeze / thaw cycles.



### Western Blotting

**Image 1.** Western blot analysis of extracts of various cell lines, using RPS23 antibody (ABIN7270019) at 1:1000 dilution. Secondary antibody: HRP Goat Anti-Rabbit IgG (H+L) (ABIN1684268 and ABIN3020597) at 1:10000 dilution. Lysates/proteins: 25 µg per lane. Blocking buffer: 3 % nonfat dry milk in TBST. Detection: ECL Basic Kit (RM00020). Exposure time: 90s.