

Datasheet for ABIN7270020  
**anti-RPS25 antibody (C-Term)**[Go to Product page](#)

## 3 Images

## Overview

Quantity:	100 µL
Target:	RPS25
Binding Specificity:	C-Term
Reactivity:	Human
Host:	Rabbit
Clonality:	Polyclonal
Conjugate:	This RPS25 antibody is un-conjugated
Application:	Western Blotting (WB), Immunofluorescence (IF)

## Product Details

Purpose:	RPS25 Rabbit pAb
Immunogen:	A synthetic peptide corresponding to a sequence within amino acids 50 to the C-terminus of human RPS25 (NP_001019.1).
Sequence:	FDKATYDKLC KEVPNYKLIT PAVVSERLKI RGSLARAALQ ELLSKGLIKL VSKHRAQVIY TRNTKGGDAP AAGEDA
Isotype:	IgG
Cross-Reactivity:	Human, Mouse, Rat
Characteristics:	Polyclonal Antibodies
Purification:	Affinity purification

## Target Details

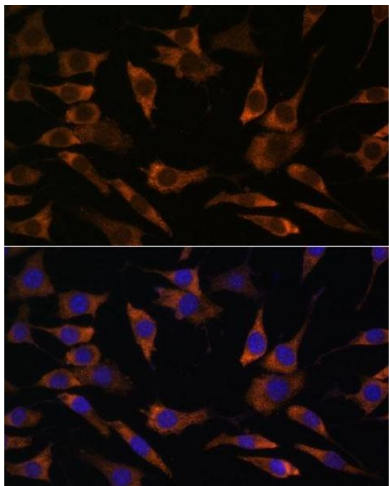
Target:	RPS25
Alternative Name:	RPS25 ( <a href="#">RPS25 Products</a> )
Background:	Ribosomes, the organelles that catalyze protein synthesis, consist of a small 40S subunit and a large 60S subunit. Together these subunits are composed of 4 RNA species and approximately 80 structurally distinct proteins. This gene encodes a ribosomal protein that is a component of the 40S subunit. The protein belongs to the S25E family of ribosomal proteins. It is located in the cytoplasm. As is typical for genes encoding ribosomal proteins, there are multiple processed pseudogenes of this gene dispersed through the genome.,RPS25,S25,Epigenetics & Nuclear Signaling,RPS25
Molecular Weight:	13kDa
Gene ID:	6230
UniProt:	<a href="#">P62851</a>
Pathways:	<a href="#">Ribonucleoprotein Complex Subunit Organization</a> , <a href="#">Ribosome Assembly</a>

## Application Details

Application Notes:	WB,1:200 - 1:2000,IF,1:50 - 1:200
Restrictions:	For Research Use only

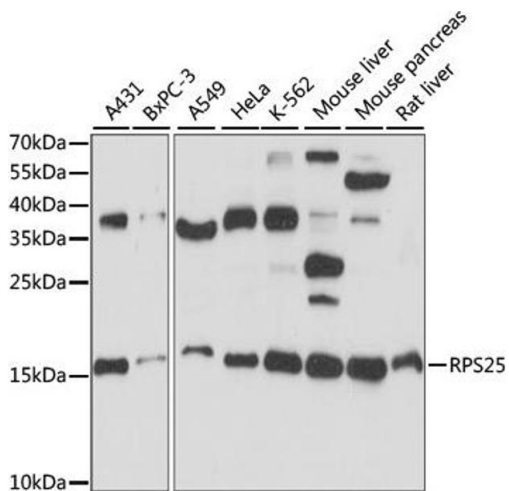
## Handling

Format:	Liquid
Buffer:	PBS with 0.02 % sodium azide,50 % glycerol, pH 7.3.
Preservative:	Sodium azide
Precaution of Use:	This product contains Sodium azide: a POISONOUS AND HAZARDOUS SUBSTANCE which should be handled by trained staff only.
Storage:	-20 °C
Storage Comment:	Store at -20°C. Avoid freeze / thaw cycles.



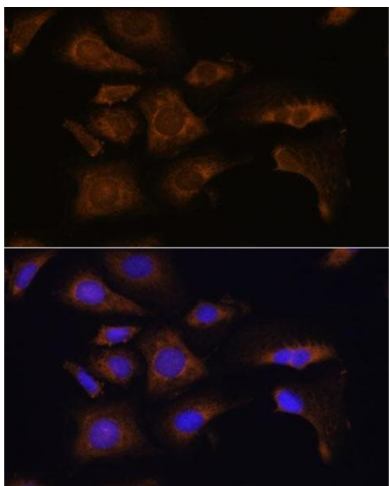
Immunofluorescence

**Image 1.** Immunofluorescence analysis of L929 cells using RPS25 antibody (ABIN7270020) at dilution of 1:100. Blue: DAPI for nuclear staining.



Western Blotting

**Image 2.** Western blot analysis of extracts of various cell lines, using RPS25 antibody (ABIN7270020) at 1:1000 dilution. Secondary antibody: HRP Goat Anti-Rabbit IgG (H+L) (ABIN1684268 and ABIN3020597) at 1:10000 dilution. Lysates/proteins: 25 µg per lane. Blocking buffer: 3 % nonfat dry milk in TBST. Detection: ECL Basic Kit (RM00020). Exposure time: 15s.



Immunofluorescence

**Image 3.** Immunofluorescence analysis of U-2 OS cells using RPS25 antibody (ABIN7270020) at dilution of 1:100. Blue: DAPI for nuclear staining.