



[Go to Product page](#)

Datasheet for ABIN7270026

anti-RPS6 antibody

3 Images

Overview

Quantity:	100 µL
Target:	RPS6
Reactivity:	Human
Host:	Rabbit
Clonality:	Monoclonal
Conjugate:	This RPS6 antibody is un-conjugated
Application:	Western Blotting (WB)

Product Details

Purpose:	S6 Ribosomal Protein (RPS6) Rabbit mAb
Immunogen:	Recombinant protein of human RPS6
Isotype:	IgG
Cross-Reactivity:	Human, Mouse, Rat
Characteristics:	Monoclonal Antibodies
Purification:	Affinity purification

Target Details

Target:	RPS6
Alternative Name:	RPS6 (RPS6 Products)
Background:	Ribosomes, the organelles that catalyze protein synthesis, consist of a small 40S subunit and a

Target Details

large 60S subunit. Together these subunits are composed of 4 RNA species and approximately 80 structurally distinct proteins. This gene encodes a cytoplasmic ribosomal protein that is a component of the 40S subunit. The protein belongs to the S6E family of ribosomal proteins. It is the major substrate of protein kinases in the ribosome, with subsets of five C-terminal serine residues phosphorylated by different protein kinases. Phosphorylation is induced by a wide range of stimuli, including growth factors, tumor-promoting agents, and mitogens.

Dephosphorylation occurs at growth arrest. The protein may contribute to the control of cell growth and proliferation through the selective translation of particular classes of mRNA. As is typical for genes encoding ribosomal proteins, there are multiple processed pseudogenes of this gene dispersed through the genome.,RPS6,S6,RPS6,Epigenetics & Nuclear Signaling,RNA Binding,Translation Control,Regulation of eIF4 and p70 S6 Kinase,Signal Transduction,PI3K-Akt Signaling Pathway,MAPK-Erk Signaling Pathway,Akt downstream targets,RPS6

Molecular Weight: 28kDa

Gene ID: 6194

UniProt: [P62753](#)

Pathways: [Carbohydrate Homeostasis](#), [Ribonucleoprotein Complex Subunit Organization](#), [Ribosome Assembly](#)

Application Details

Application Notes: WB,1:500 - 1:2000

Restrictions: For Research Use only

Handling

Format: Liquid

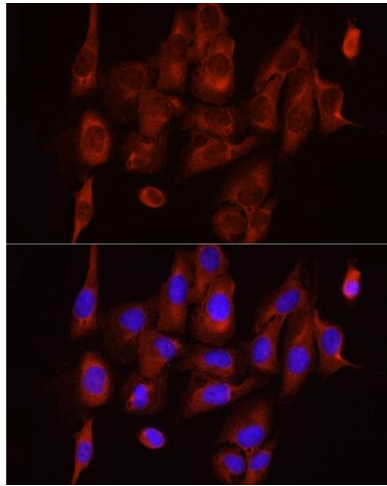
Buffer: PBS with 0.02 % sodium azide,50 % glycerol, pH 7.3.

Preservative: Sodium azide

Precaution of Use: This product contains Sodium azide: a POISONOUS AND HAZARDOUS SUBSTANCE which should be handled by trained staff only.

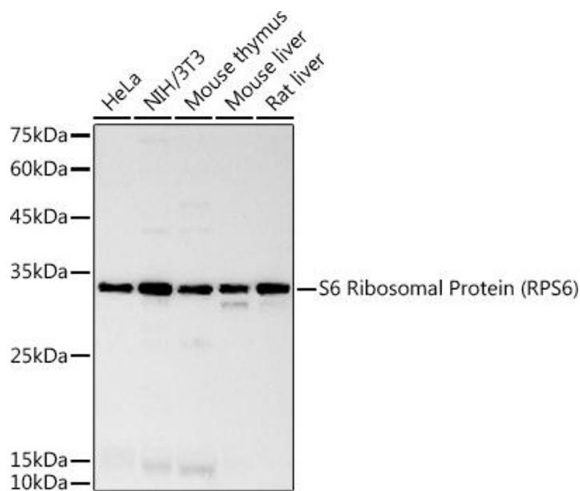
Storage: -20 °C

Storage Comment: Store at -20°C. Avoid freeze / thaw cycles.



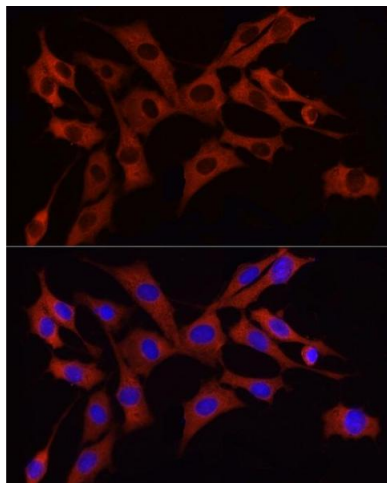
Immunofluorescence

Image 1. Immunofluorescence analysis of U2OS cells using S6 Ribosomal Protein (RPS6) Rabbit mAb (ABIN7270026) at dilution of 1:100 (40x lens). Blue: DAPI for nuclear staining.



Western Blotting

Image 2. Western blot analysis of extracts of various cell lines, using S6 Ribosomal Protein (RPS6) antibody (ABIN7270026) at 1:1000 dilution. Secondary antibody: HRP Goat Anti-Rabbit IgG (H+L) (ABIN1684268 and ABIN3020597) at 1:10000 dilution. Lysates/proteins: 25 µg per lane. Blocking buffer: 3% nonfat dry milk in TBST. Detection: ECL Basic Kit (RM00020). Exposure time: 180s.



Immunofluorescence

Image 3. Immunofluorescence analysis of NIH/3T3 cells using S6 Ribosomal Protein (RPS6) Rabbit mAb (ABIN7270026) at dilution of 1:100 (40x lens). Blue: DAPI for nuclear staining.