

Datasheet for ABIN7270048
anti-RPE antibody (AA 1-228)



[Go to Product page](#)

2 Images

Overview

Quantity:	100 µL
Target:	RPE
Binding Specificity:	AA 1-228
Reactivity:	Human
Host:	Rabbit
Clonality:	Polyclonal
Conjugate:	This RPE antibody is un-conjugated
Application:	Western Blotting (WB), Immunohistochemistry (IHC), Immunofluorescence (IF)

Product Details

Purpose:	RPE Rabbit pAb
Immunogen:	Recombinant fusion protein containing a sequence corresponding to amino acids 1-228 of human RPE (NP_954699.1).
Sequence:	MASGCKIGPS ILNSDLANLG AECLRMLDSG ADYLHLDVMD GHFVPNITFG HPVVESLRKQ LGQDPFFDMH MMVSKPEQWV KPMAVAGANQ YTFHLEATEN PGALIKDIRE NGMKVGLAIK PGTSVEYLAP WANQIDMALV MTVEPGFGGQ KFMEDMMPKV HWLRTQFPSL DIEVDGGVGP DTVHKCAEAG ANMIVSGSAI MRSEDPRSVI NLLRNVCESEA AQRSLDR
Isotype:	IgG
Cross-Reactivity:	Human, Mouse, Rat
Characteristics:	Polyclonal Antibodies

Product Details

Purification: Affinity purification

Target Details

Target: RPE

Alternative Name: RPE ([RPE Products](#))

Background: Catalyzes the reversible epimerization of D-ribulose 5-phosphate to D-xylulose 5-phosphate.,RPE,RPE2-1,Cancer,Signal Transduction,Endocrine & Metabolism,Carbohydrate metabolism,RPE

Molecular Weight: 17kDa/19kDa/21kDa/23kDa/24kDa

Gene ID: 6120

UniProt: [Q96AT9](#)

Application Details

Application Notes: WB,1:500 - 1:2000,IHC,1:50 - 1:100,IF,1:50 - 1:100

Restrictions: For Research Use only

Handling

Format: Liquid

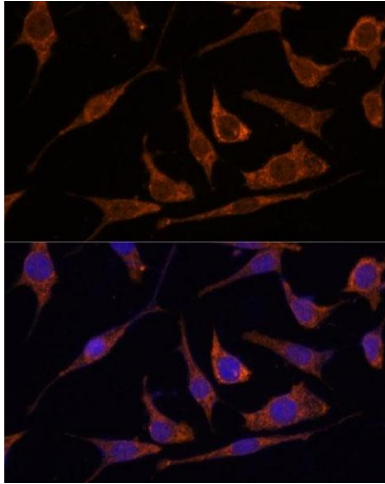
Buffer: PBS with 0.02 % sodium azide,50 % glycerol, pH 7.3.

Preservative: Sodium azide

Precaution of Use: This product contains Sodium azide: a POISONOUS AND HAZARDOUS SUBSTANCE which should be handled by trained staff only.

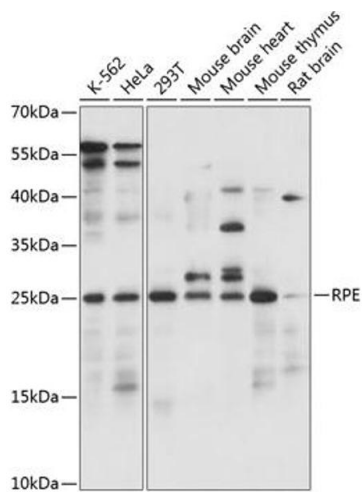
Storage: -20 °C

Storage Comment: Store at -20°C. Avoid freeze / thaw cycles.



Immunofluorescence

Image 1. Immunofluorescence analysis of L929 cells using RPE Polyclonal Antibody (ABIN7270048) at dilution of 1:100 (40x lens). Blue: DAPI for nuclear staining.



Western Blotting

Image 2. Western blot analysis of extracts of various cell lines, using RPE antibody (ABIN7270048) at 1:1000 dilution. Secondary antibody: HRP Goat Anti-Rabbit IgG (H+L) (ABIN1684268 and ABIN3020597) at 1:10000 dilution. Lysates/proteins: 25 µg per lane. Blocking buffer: 3 % nonfat dry milk in TBST. Detection: ECL Basic Kit (RM00020). Exposure time: 5s.