

Datasheet for ABIN7270050

anti-RCHY1 antibody**1** Image[Go to Product page](#)

Overview

Quantity:	100 µL
Target:	RCHY1
Reactivity:	Human
Host:	Rabbit
Clonality:	Monoclonal
Conjugate:	This RCHY1 antibody is un-conjugated
Application:	Western Blotting (WB)

Product Details

Purpose:	RCHY1 Rabbit mAb
Immunogen:	Recombinant protein of human RCHY1.
Isotype:	IgG
Cross-Reactivity:	Human, Mouse
Characteristics:	Monoclonal Antibodies
Purification:	Affinity purification

Target Details

Target:	RCHY1
Alternative Name:	RCHY1 (RCHY1 Products)
Background:	The protein encoded by this gene has ubiquitin ligase activity. It mediates E3-dependent

Target Details

ubiquitination and proteasomal degradation of target proteins, including tumor protein 53, histone deacetylase 1, and cyclin-dependent kinase inhibitor 1B, thus regulating their levels and cell cycle progression. Alternatively spliced transcript variants encoding different isoforms have been described for this gene.,RCHY1, ARNIP, CHIMP, PIRH2, PRO1996, RNF199, ZCHY, ZNF363, ring finger and CHY zinc finger domain containing 1,Cancer,Tumor suppressors,p53 pathway,Cell Biology & Developmental Biology,Cell Cycle,Cell cycle inhibitors,Ubiquitin,Ubiquitin-Proteasome Signaling Pathway,RCHY1

Molecular Weight: 30kDa

Gene ID: 25898

UniProt: [Q96PM5](#)

Application Details

Application Notes: WB,1:500 - 1:2000

Restrictions: For Research Use only

Handling

Format: Liquid

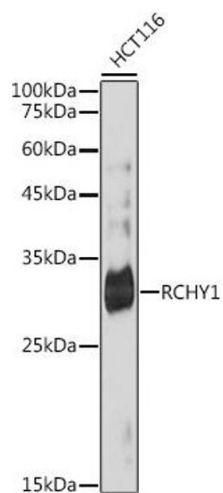
Buffer: PBS with 0.02 % sodium azide,0.05 % BSA,50 % glycerol, pH 7.3.

Preservative: Sodium azide

Precaution of Use: This product contains Sodium azide: a POISONOUS AND HAZARDOUS SUBSTANCE which should be handled by trained staff only.

Storage: -20 °C

Storage Comment: Store at -20°C. Avoid freeze / thaw cycles.



Western Blotting

Image 1. Western blot analysis of extracts of HCT116 cells, using RCHY1 antibody (ABIN7270050) at 1:1000 dilution. Secondary antibody: HRP Goat Anti-Rabbit IgG (H+L) (ABIN1684268 and ABIN3020597) at 1:10000 dilution. Lysates/proteins: 25 µg per lane. Blocking buffer: 3 % nonfat dry milk in TBST. Detection: ECL Basic Kit (RM00020). Exposure time: 180s.