



[Go to Product page](#)

Datasheet for ABIN7270063
anti-RNF152 antibody (AA 100-200)

1 Image

Overview

Quantity:	100 µL
Target:	RNF152
Binding Specificity:	AA 100-200
Reactivity:	Human
Host:	Rabbit
Clonality:	Polyclonal
Conjugate:	This RNF152 antibody is un-conjugated
Application:	Western Blotting (WB)

Product Details

Purpose:	RNF152 Rabbit pAb
Immunogen:	A synthetic peptide corresponding to a sequence within amino acids 100-200 of human RNF152 (NP_775828.1).
Sequence:	YMLPLPISKE RALLPGDMGC RLLPGSQQKS VTVVTIPAEQ QPLQGGAPQE AVEEEQDRRG VVKSTWSGV CTVILVACVL VFLLGIVLHN MSCISKRFTV I
Isotype:	IgG
Cross-Reactivity:	Human
Characteristics:	Polyclonal Antibodies
Purification:	Affinity purification

Target Details

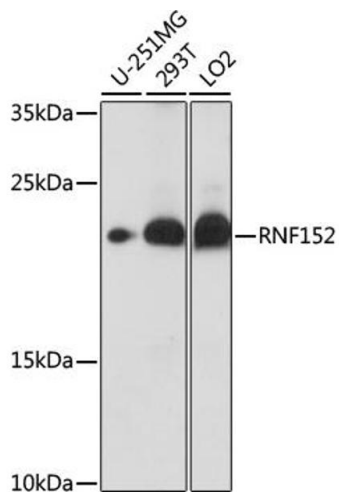
Target:	RNF152
Alternative Name:	RNF152 (RNF152 Products)
Background:	E3 ubiquitin-protein ligase mediating 'Lys-63'-linked polyubiquitination of RRAGA in response to amino acid starvation. Thereby, regulates mTORC1 signaling and plays a role in the cellular response to amino acid availability. Also mediates 'Lys-48'-linked polyubiquitination of target proteins and their subsequent targeting to the proteasome for degradation. Induces apoptosis when overexpressed.,RNF152,RNF152
Molecular Weight:	22kDa
Gene ID:	220441
UniProt:	Q8N8N0

Application Details

Application Notes:	WB,1:500 - 1:2000
Restrictions:	For Research Use only

Handling

Format:	Liquid
Buffer:	PBS with 0.02 % sodium azide,50 % glycerol, pH 7.3.
Preservative:	Sodium azide
Precaution of Use:	This product contains Sodium azide: a POISONOUS AND HAZARDOUS SUBSTANCE which should be handled by trained staff only.
Storage:	-20 °C
Storage Comment:	Store at -20°C. Avoid freeze / thaw cycles.



Western Blotting

Image 1. Western blot analysis of extracts of various cell lines, using RNF152 antibody (ABIN7270063) at 1:1000 dilution. Secondary antibody: HRP Goat Anti-Rabbit IgG (H+L) (ABIN1684268 and ABIN3020597) at 1:10000 dilution. Lysates/proteins: 25 µg per lane. Blocking buffer: 3 % nonfat dry milk in TBST. Detection: ECL Basic Kit (RM00020). Exposure time: 10s.