



[Go to Product page](#)

Datasheet for ABIN7270076
anti-RLIM antibody (AA 535-624)

1 Image

Overview

Quantity:	100 µL
Target:	RLIM
Binding Specificity:	AA 535-624
Reactivity:	Human
Host:	Rabbit
Clonality:	Polyclonal
Conjugate:	This RLIM antibody is un-conjugated
Application:	Western Blotting (WB)

Product Details

Purpose:	RLIM Rabbit pAb
Immunogen:	Recombinant fusion protein containing a sequence corresponding to amino acids 535-624 of human RLIM (NP_057204.2).
Sequence:	FLLNEDDDDQ PRGLTKEQID NLAMRSFGEN DALKTCSVCI TEYTEGNKLR KLPCSHEYHV HCIDRWLSEN STCPICRRAV LASGNRESVV
Isotype:	IgG
Cross-Reactivity:	Human, Mouse
Characteristics:	Polyclonal Antibodies
Purification:	Affinity purification

Target Details

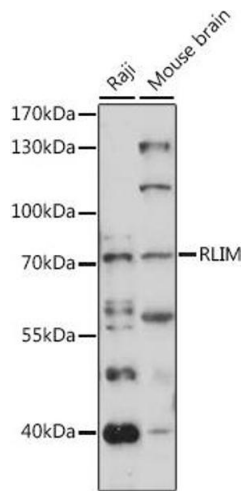
Target:	RLIM
Alternative Name:	RLIM (RLIM Products)
Background:	The protein encoded by this gene is a RING-H2 zinc finger protein. It has been shown to be an E3 ubiquitin protein ligase that targets LIM domain binding 1 (LDB1/CLIM), and causes proteasome-dependent degradation of LDB1. This protein and LDB1 are co-repressors of LHX1/LIM-1, a homeodomain transcription factor. Multiple alternatively spliced variants, encoding the same protein, have been identified.,RLIM,MRX61,NY-REN-43,RNF12,Epigenetics & Nuclear Signaling,RLIM
Molecular Weight:	52kDa/68kDa
Gene ID:	51132
UniProt:	Q9NVW2

Application Details

Application Notes:	WB,1:500 - 1:2000
Restrictions:	For Research Use only

Handling

Format:	Liquid
Buffer:	PBS with 0.02 % sodium azide,50 % glycerol, pH 7.3.
Preservative:	Sodium azide
Precaution of Use:	This product contains Sodium azide: a POISONOUS AND HAZARDOUS SUBSTANCE which should be handled by trained staff only.
Storage:	-20 °C
Storage Comment:	Store at -20°C. Avoid freeze / thaw cycles.



Western Blotting

Image 1. Western blot analysis of extracts of various cell lines, using RLIM antibody (ABIN7270076) at 1:1000 dilution. Secondary antibody: HRP Goat Anti-Rabbit IgG (H+L) (ABIN1684268 and ABIN3020597) at 1:10000 dilution. Lysates/proteins: 25 µg per lane. Blocking buffer: 3 % nonfat dry milk in TBST. Detection: ECL Basic Kit (RM00020). Exposure time: 150s.