



[Go to Product page](#)

Datasheet for ABIN7270086
anti-RBM46 antibody (AA 1-140)

1 Image

Overview

Quantity:	100 µL
Target:	RBM46
Binding Specificity:	AA 1-140
Reactivity:	Human
Host:	Rabbit
Clonality:	Polyclonal
Conjugate:	This RBM46 antibody is un-conjugated
Application:	Western Blotting (WB)

Product Details

Purpose:	RBM46 Rabbit pAb
Immunogen:	Recombinant fusion protein containing a sequence corresponding to amino acids 1-140 of human RBM46 (NP_659416.1).
Sequence:	MNEENIDGTN GCSKVRTGIQ NEAALLALME KTGYNMVQEN GQRKFGGPPP GWEGPPPPRG CEVFGKIPR DMYEDELVPV FERAGKIYEF RLMMEFSGEN RGYAFVMYTT KEEAQLAIRI LNNYEIRPGK FIGVCVSLDN
Isotype:	IgG
Cross-Reactivity:	Human, Mouse, Rat
Characteristics:	Polyclonal Antibodies
Purification:	Affinity purification

Target Details

Target:	RBM46
Alternative Name:	RBM46 (RBM46 Products)
Background:	RBM46,CT68,Epigenetics & Nuclear Signaling,RBM46
Molecular Weight:	53kDa/55kDa/60kDa
Gene ID:	166863
UniProt:	Q8TBY0

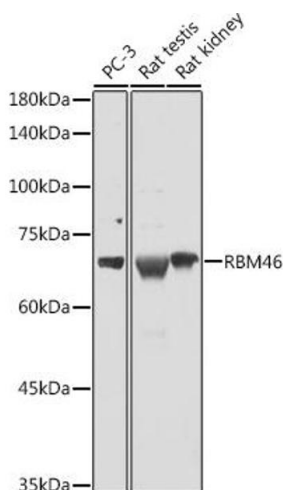
Application Details

Application Notes:	WB,1:500 - 1:2000
Restrictions:	For Research Use only

Handling

Format:	Liquid
Buffer:	PBS with 0.02 % sodium azide,50 % glycerol, pH 7.3.
Preservative:	Sodium azide
Precaution of Use:	This product contains Sodium azide: a POISONOUS AND HAZARDOUS SUBSTANCE which should be handled by trained staff only.
Storage:	-20 °C
Storage Comment:	Store at -20°C. Avoid freeze / thaw cycles.

Images



Western Blotting

Image 1. Western blot analysis of extracts of various cell lines, using RBM46 antibody (ABIN7270086) at 1:1000 dilution. Secondary antibody: HRP Goat Anti-Rabbit IgG (H+L) (ABIN1684268 and ABIN3020597) at 1:10000 dilution. Lysates/proteins: 25 µg per lane. Blocking buffer: 3 % nonfat dry milk in TBST. Detection: ECL Basic Kit (RM00020). Exposure time: 5s.