

Datasheet for ABIN7270089

anti-RBM8A antibody**1** Image[Go to Product page](#)

Overview

Quantity:	100 µL
Target:	RBM8A
Reactivity:	Human
Host:	Rabbit
Clonality:	Monoclonal
Conjugate:	This RBM8A antibody is un-conjugated
Application:	Western Blotting (WB)

Product Details

Purpose:	Y14/RBM8A Rabbit mAb
Immunogen:	A synthesized peptide derived from human Y14/RBM8A
Isotype:	IgG
Cross-Reactivity:	Human, Mouse, Rat
Characteristics:	Monoclonal Antibodies
Purification:	Affinity purification

Target Details

Target:	RBM8A
Alternative Name:	RBM8A (RBM8A Products)
Background:	This gene encodes a protein with a conserved RNA-binding motif. The protein is found

Target Details

predominantly in the nucleus, although it is also present in the cytoplasm. It is preferentially associated with mRNAs produced by splicing, including both nuclear mRNAs and newly exported cytoplasmic mRNAs. It is thought that the protein remains associated with spliced mRNAs as a tag to indicate where introns had been present, thus coupling pre- and post-mRNA splicing events. Previously, it was thought that two genes encode this protein, RBM8A and RBM8B, it is now thought that the RBM8B locus is a pseudogene. There are two alternate translation start codons with this gene, which result in two forms of the protein. An allele mutation and a low-frequency noncoding single-nucleotide polymorphism (SNP) in this gene cause thrombocytopenia-absent radius (TAR) syndrome. [provided by RefSeq, Jul 2013],BOV-1A, BOV-1B, BOV-1C, C1DELq21.1, DEL1q21.1, MDS014, RBM8, RBM8B, TAR, Y14, ZNRP, ZRNP1,Epigenetics & Nuclear Signaling,RBM8A

Molecular Weight: 19kDa

Gene ID: 9939

UniProt: [Q9Y5S9](#)

Application Details

Application Notes: WB,1:500 - 1:2000

Restrictions: For Research Use only

Handling

Format: Liquid

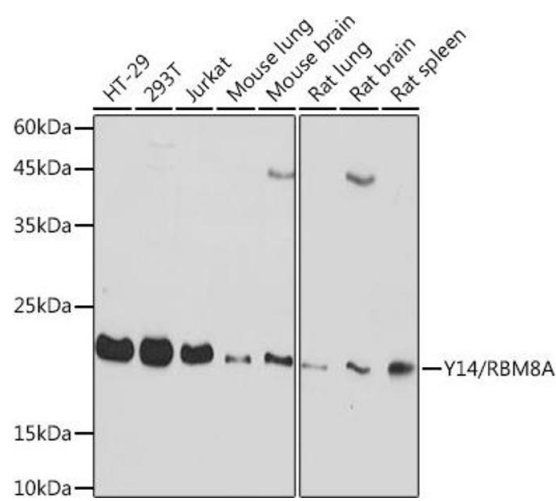
Buffer: PBS with 0.02 % sodium azide,0.05 % BSA,50 % glycerol, pH 7.3.

Preservative: Sodium azide

Precaution of Use: This product contains Sodium azide: a POISONOUS AND HAZARDOUS SUBSTANCE which should be handled by trained staff only.

Storage: -20 °C

Storage Comment: Store at -20°C. Avoid freeze / thaw cycles.



Western Blotting

Image 1. Western blot analysis of extracts of various cell lines, using Y14/RBM8A Rabbit mAb (ABIN7270089) at 1:1000 dilution. Secondary antibody: HRP Goat Anti-Rabbit IgG (H+L) (ABIN1684268 and ABIN3020597) at 1:10000 dilution. Lysates/proteins: 25 µg per lane. Blocking buffer: 3 % nonfat dry milk in TBST. Detection: ECL Basic Kit (RM00020). Exposure time: 20s.